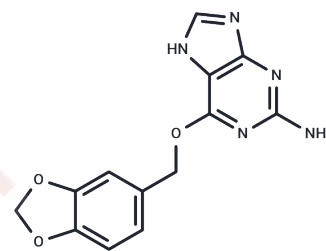


API32

## Chemical Properties

CAS No. : 162320-41-4  
 Formula: C<sub>13</sub>H<sub>11</sub>N<sub>5</sub>O<sub>3</sub>  
 Molecular Weight: 285.258  
 Storage: Powder: -20°C for 3 years | In solvent: -80°C for 1 year  
 Actual storage temperature shall be subject to the COA.



## Biological Description

Description	API32 is a potent Pin1 inhibitor that interacts with the Pin1 PPIase domain. It effectively suppresses cell proliferation and migration, making it a promising candidate for research in hepatocellular carcinoma (HCC).
Targets(IC50)	Others

## Preparing Stock Solutions

	1mg	5mg	10mg
1 mM	3.5056 mL	17.5279 mL	35.0557 mL
5 mM	0.7011 mL	3.5056 mL	7.0111 mL
10 mM	0.3506 mL	1.7528 mL	3.5056 mL
50 mM	0.0701 mL	0.3506 mL	0.7011 mL

Please select the appropriate solvent to prepare the stock solution, according to the solubility of the product in different solvents. Please use it as soon as possible.

Note: The dilution table applies only to solid products. For liquid products, please calculate the stock solution based on the stated concentration and/or density.

Inhibitor · Natural Compounds · Compound Libraries · Recombinant Proteins

This product is for Research Use Only · Not for Human or Veterinary or Therapeutic Use

Tel:781-999-4286 E\_mail:info@targetmol.com Address:34 Washington Street,Wellesley Hills,MA 02481