

AT1R epitope

Chemical Properties

CAS No. : 161146-12-9

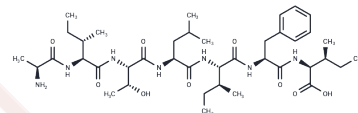
Formula: C40H67N7O9

Molecular Weight: 790.002

Keep away from moisture

Storage: Powder: -20°C for 3 years | In solvent: -80°C for 1 year

Actual storage temperature shall be subject to the COA.



Biological Description

Description	AT1R epitope (iCF10) is a heptapeptide and acts as a competitive inhibitor of cCF10, a peptide pheromone.
Targets(IC50)	Endogenous Metabolite

Preparing Stock Solutions

	1mg	5mg	10mg
1 mM	1.2658 mL	6.3291 mL	12.6582 mL
5 mM	0.2532 mL	1.2658 mL	2.5316 mL
10 mM	0.1266 mL	0.6329 mL	1.2658 mL
50 mM	0.0253 mL	0.1266 mL	0.2532 mL

Please select the appropriate solvent to prepare the stock solution, according to the solubility of the product in different solvents. Please use it as soon as possible.

Note: The dilution table applies only to solid products. For liquid products, please calculate the stock solution based on the stated concentration and/or density.

Inhibitor · Natural Compounds · Compound Libraries · Recombinant Proteins

This product is for Research Use Only · Not for Human or Veterinary or Therapeutic Use

Tel: 781-999-4286 E_mail: info@targetmol.com Address: 34 Washington Street, Wellesley Hills, MA 02481