

cTEV6-2

Chemical Properties

CAS No. :

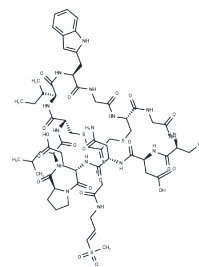
Formula: C63H93N17O22S3

Molecular Weight: 1536.71

Keep away from moisture

Storage: Powder: -20°C for 3 years | In solvent: -80°C for 1 year

Actual storage temperature shall be subject to the COA.



Biological Description

| | |
|---------------|--|
| Description | cTEV6-2 covalently inhibits the Tobacco Etch Virus protease (TEV protease) by binding to its cysteine residue (C151), with an IC50 of 81.7 nM. |
| Targets(IC50) | Virus Protease |

Preparing Stock Solutions

| | 1mg | 5mg | 10mg |
|-------|-----------|-----------|-----------|
| 1 mM | 0.6507 mL | 3.2537 mL | 6.5074 mL |
| 5 mM | 0.1301 mL | 0.6507 mL | 1.3015 mL |
| 10 mM | 0.0651 mL | 0.3254 mL | 0.6507 mL |
| 50 mM | 0.013 mL | 0.0651 mL | 0.1301 mL |

Please select the appropriate solvent to prepare the stock solution, according to the solubility of the product in different solvents. Please use it as soon as possible.

Note: The dilution table applies only to solid products. For liquid products, please calculate the stock solution based on the stated concentration and/or density.

Inhibitor · Natural Compounds · Compound Libraries · Recombinant Proteins

This product is for Research Use Only · Not for Human or Veterinary or Therapeutic Use

Tel:781-999-4286 E_mail:info@targetmol.com Address:34 Washington Street,Wellesley Hills,MA 02481