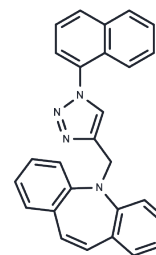


BChE-IN-38

## Chemical Properties

CAS No. : 3054159-55-3  
 Formula: C<sub>27</sub>H<sub>20</sub>N<sub>4</sub>  
 Molecular Weight: 400.474  
 Storage: Powder: -20°C for 3 years | In solvent: -80°C for 1 year  
 Actual storage temperature shall be subject to the COA.



## Biological Description

Description	BChE-IN-38 (compound 13) is a potent BChE inhibitor, with $K_i$ values of 62.05, 28.78, 14.09, and 1.15 nM for hCAI, hCAII, AChE, and BChE, respectively. BChE-IN-38 also demonstrates cytotoxic activity.
Targets(IC50)	Cholinesterase (ChE)

## Preparing Stock Solutions

	1mg	5mg	10mg
1 mM	2.4971 mL	12.4853 mL	24.9707 mL
5 mM	0.4994 mL	2.4971 mL	4.9941 mL
10 mM	0.2497 mL	1.2485 mL	2.4971 mL
50 mM	0.0499 mL	0.2497 mL	0.4994 mL

Please select the appropriate solvent to prepare the stock solution, according to the solubility of the product in different solvents. Please use it as soon as possible.

Note: The dilution table applies only to solid products. For liquid products, please calculate the stock solution based on the stated concentration and/or density.

Inhibitor · Natural Compounds · Compound Libraries · Recombinant Proteins

This product is for Research Use Only · Not for Human or Veterinary or Therapeutic Use

Tel: 781-999-4286 E\_mail: info@targetmol.com Address: 34 Washington Street, Wellesley Hills, MA 02481