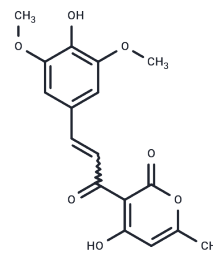


Suptopin-2

Chemical Properties

CAS No. :	331852-66-5
Formula:	C17H16O7
Molecular Weight:	332.305
Storage:	Powder: -20°C for 3 years In solvent: -80°C for 1 year Actual storage temperature shall be subject to the COA.



Biological Description

Description	Sutopin-2 is a topoisomerase II inhibitor that affects cell cycle progression and microtubule stability. It induces cell cycle arrest by regulating the nuclear-cytoplasmic transport of cyclin B1.
Targets(IC50)	Topoisomerase

Preparing Stock Solutions

	1mg	5mg	10mg
1 mM	3.0092 mL	15.0462 mL	30.0924 mL
5 mM	0.6018 mL	3.0092 mL	6.0185 mL
10 mM	0.3009 mL	1.5046 mL	3.0092 mL
50 mM	0.0602 mL	0.3009 mL	0.6018 mL

Please select the appropriate solvent to prepare the stock solution, according to the solubility of the product in different solvents. Please use it as soon as possible.

Note: The dilution table applies only to solid products. For liquid products, please calculate the stock solution based on the stated concentration and/or density.

Inhibitor · Natural Compounds · Compound Libraries · Recombinant Proteins

This product is for Research Use Only · Not for Human or Veterinary or Therapeutic Use

Tel: 781-999-4286 E_mail: info@targetmol.com Address: 34 Washington Street, Wellesley Hills, MA 02481