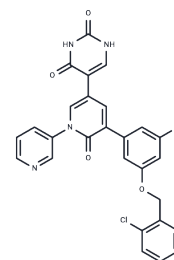


## SARS-CoV-2 3CLpro-IN-28

## Chemical Properties

|                   |   |
|-------------------|---|
| CAS No. :         | 2603242-35-7  |
| Formula:          | C <sub>27</sub> H <sub>18</sub> Cl <sub>2</sub> N <sub>4</sub> O <sub>4</sub>                                       |
| Molecular Weight: | 533.362   |
| Storage:          | Powder: -20°C for 3 years   In solvent: -80°C for 1 year<br>Actual storage temperature shall be subject to the COA. |



## Biological Description

|                            |   |
|----------------------------|---|
| Description                | SARS-CoV-2 3CLpro-IN-28 (Compound 19) is an inhibitor of SARS-CoV-2 3CLpro, exhibiting an IC <sub>50</sub> value of 0.018 μM. |
| Targets(IC <sub>50</sub> ) | SARS-CoV, Virus Protease  |

## Preparing Stock Solutions

|       | 1mg       | 5mg       | 10mg       |
|-------|-----------|-----------|------------|
| 1 mM  | 1.8749 mL | 9.3745 mL | 18.7491 mL |
| 5 mM  | 0.375 mL  | 1.8749 mL | 3.7498 mL  |
| 10 mM | 0.1875 mL | 0.9375 mL | 1.8749 mL  |
| 50 mM | 0.0375 mL | 0.1875 mL | 0.375 mL   |

Please select the appropriate solvent to prepare the stock solution, according to the solubility of the product in different solvents. Please use it as soon as possible.

Note: The dilution table applies only to solid products. For liquid products, please calculate the stock solution based on the stated concentration and/or density.

**Inhibitor · Natural Compounds · Compound Libraries · Recombinant Proteins**

This product is for Research Use Only · Not for Human or Veterinary or Therapeutic Use

Tel: 781-999-4286 E\_mail: info@targetmol.com Address: 34 Washington Street, Wellesley Hills, MA 02481