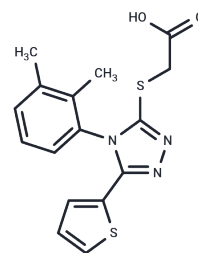


PIN1 inhibitor 6

Chemical Properties

| | |
|-------------------|---|
| CAS No. : | 637325-53-2 |
| Formula: | C ₁₆ H ₁₅ N ₃ O ₂ S ₂ |
| Molecular Weight: | 345.439 |
| Storage: | Powder: -20°C for 3 years In solvent: -80°C for 1 year Actual storage temperature shall be subject to the COA. |



Biological Description

| | |
|---------------|--|
| Description | PIN1 inhibitor6 (compound 38) is a Pin1 inhibitor utilized in cancer research. |
| Targets(IC50) | Others |

Preparing Stock Solutions

| | 1mg | 5mg | 10mg |
|-------|-----------|------------|------------|
| 1 mM | 2.8949 mL | 14.4743 mL | 28.9486 mL |
| 5 mM | 0.579 mL | 2.8949 mL | 5.7897 mL |
| 10 mM | 0.2895 mL | 1.4474 mL | 2.8949 mL |
| 50 mM | 0.0579 mL | 0.2895 mL | 0.579 mL |

Please select the appropriate solvent to prepare the stock solution, according to the solubility of the product in different solvents. Please use it as soon as possible.

Note: The dilution table applies only to solid products. For liquid products, please calculate the stock solution based on the stated concentration and/or density.

Inhibitor · Natural Compounds · Compound Libraries · Recombinant Proteins

This product is for Research Use Only · Not for Human or Veterinary or Therapeutic Use

Tel:781-999-4286 E_mail:info@targetmol.com Address:34 Washington Street,Wellesley Hills,MA 02481