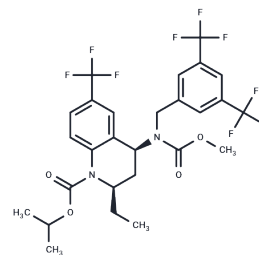


CP 524515

## Chemical Properties

CAS No. : 262352-13-6  
 Formula: C<sub>27</sub>H<sub>27</sub>F<sub>9</sub>N<sub>2</sub>O<sub>4</sub>  
 Molecular Weight: 614.5  
 Storage: Powder: -20°C for 3 years | In solvent: -80°C for 1 year  
 Actual storage temperature shall be subject to the COA.



## Biological Description

Description	CP 524515 is a potent inhibitor of cholesterol ester transfer protein (CETP), which results in increased levels of high-density lipoprotein cholesterol.
Targets(IC50)	CETP

## Preparing Stock Solutions

	1mg	5mg	10mg
1 mM	1.6273 mL	8.1367 mL	16.2734 mL
5 mM	0.3255 mL	1.6273 mL	3.2547 mL
10 mM	0.1627 mL	0.8137 mL	1.6273 mL
50 mM	0.0325 mL	0.1627 mL	0.3255 mL

Please select the appropriate solvent to prepare the stock solution, according to the solubility of the product in different solvents. Please use it as soon as possible.

Note: The dilution table applies only to solid products. For liquid products, please calculate the stock solution based on the stated concentration and/or density.

Inhibitor · Natural Compounds · Compound Libraries · Recombinant Proteins

This product is for Research Use Only · Not for Human or Veterinary or Therapeutic Use

Tel: 781-999-4286 E\_mail: info@targetmol.com Address: 34 Washington Street, Wellesley Hills, MA 02481