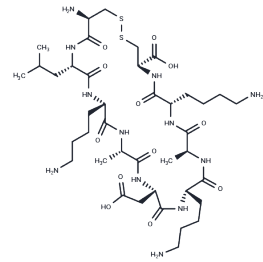


## CK3 peptide

## Chemical Properties

CAS No. :	1801552-75-9
Formula:	C40H72N12O12S2
Molecular Weight:	977.203
Storage:	Keep away from moisture Powder: -20°C for 3 years   In solvent: -80°C for 1 year <small>Actual storage temperature shall be subject to the COA.</small>



## Biological Description

Description	CK3 peptide is an NRP-1-targeting peptide with the amino acid sequence CLKADKAKC. It specifically binds to NRP-1 to target breast cancer cells. Single-photon emission computed tomography (SPECT) and near-infrared fluorescence (NIRF) imaging demonstrate that CK3 peptide significantly accumulates in xenograft tumors in nude mice. CK3 peptide is applicable for molecular imaging studies of breast cancer.
Targets(IC50)	Complement System

## Preparing Stock Solutions

	1mg	5mg	10mg
1 mM	1.0233 mL	5.1167 mL	10.2333 mL
5 mM	0.2047 mL	1.0233 mL	2.0467 mL
10 mM	0.1023 mL	0.5117 mL	1.0233 mL
50 mM	0.0205 mL	0.1023 mL	0.2047 mL

Please select the appropriate solvent to prepare the stock solution, according to the solubility of the product in different solvents. Please use it as soon as possible.

Note: The dilution table applies only to solid products. For liquid products, please calculate the stock solution based on the stated concentration and/or density.

Inhibitor · Natural Compounds · Compound Libraries · Recombinant Proteins

This product is for Research Use Only · Not for Human or Veterinary or Therapeutic Use

Tel:781-999-4286 E\_mail:info@targetmol.com Address:34 Washington Street,Wellesley Hills,MA 02481