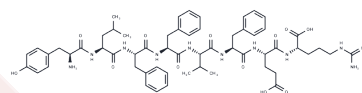


HER2-targeted peptide H6F

Chemical Properties

CAS No. :	1644155-35-0
Formula:	C58H77N11O12
Molecular Weight:	1120.3
Storage:	Keep away from moisture Powder: -20°C for 3 years In solvent: -80°C for 1 year <small>Actual storage temperature shall be subject to the COA.</small>



Biological Description

Description	HER2-targeted peptide H6F is a molecule designed to bind to HER2 and target breast cancer cells, characterized by the amino acid sequence YLFFVFER. It can conjugate with the bifunctional chelator hydrazinonicotinamide (HYNIC) for binding with 99mTc for radiolabeling purposes. Single-photon emission computed tomography (SPECT) imaging demonstrates that the radiolabeled HER2-targeted peptide H6F specifically accumulates in HER2-positive MDA-MB-453 tumor-bearing mouse models. This peptide is useful for studies in tumor molecular imaging.
Targets(IC50)	EGFR

Preparing Stock Solutions

	1mg	5mg	10mg
1 mM	0.8926 mL	4.4631 mL	8.9262 mL
5 mM	0.1785 mL	0.8926 mL	1.7852 mL
10 mM	0.0893 mL	0.4463 mL	0.8926 mL
50 mM	0.0179 mL	0.0893 mL	0.1785 mL

Please select the appropriate solvent to prepare the stock solution, according to the solubility of the product in different solvents. Please use it as soon as possible.

Note: The dilution table applies only to solid products. For liquid products, please calculate the stock solution based on the stated concentration and/or density.

Inhibitor · Natural Compounds · Compound Libraries · Recombinant Proteins

This product is for Research Use Only · Not for Human or Veterinary or Therapeutic Use

Tel:781-999-4286 E_mail:info@targetmol.com Address:34 Washington Street,Wellesley Hills,MA 02481