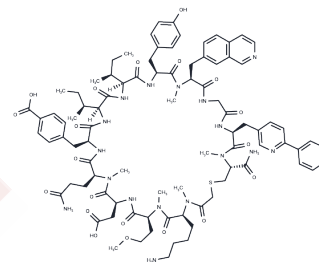


GPC3 targeting peptide 1

Chemical Properties

CAS No. :	3066113-41-2
Formula:	C89H117N17O20S
Molecular Weight:	1777.05
Storage:	Keep away from moisture Powder: -20°C for 3 years In solvent: -80°C for 1 year <small>Actual storage temperature shall be subject to the COA.</small>



Biological Description

Description	GPC3 targeting peptide 1 is a synthetic peptide ligand that binds to glypican-3 (GPC3) with a high affinity dissociation constant (Kd) of 0.23 nM. GPC3 targeting peptide 1 serves as a precise molecular probe for detecting and targeting GPC3-expressing tumor cells, particularly in hepatocellular carcinoma research, facilitating targeted imaging and therapeutic applications.
Targets(IC50)	Others

Preparing Stock Solutions

	1mg	5mg	10mg
1 mM	0.5627 mL	2.8137 mL	5.6273 mL
5 mM	0.1125 mL	0.5627 mL	1.1255 mL
10 mM	0.0563 mL	0.2814 mL	0.5627 mL
50 mM	0.0113 mL	0.0563 mL	0.1125 mL

Please select the appropriate solvent to prepare the stock solution, according to the solubility of the product in different solvents. Please use it as soon as possible.

Note: The dilution table applies only to solid products. For liquid products, please calculate the stock solution based on the stated concentration and/or density.

Reference

EHARA, et al. PEPTIDE COMPOSITIONS TARGETING GLYPICAN-3 AND USES THEREOF. WO. WO 2024/252336 A. 2024.12.12.

Inhibitor · Natural Compounds · Compound Libraries · Recombinant Proteins

This product is for Research Use Only · Not for Human or Veterinary or Therapeutic Use

Tel:781-999-4286 E_mail:info@targetmol.com Address:34 Washington Street,Wellesley Hills,MA 02481