

LH2 peptide

Chemical Properties

CAS No. :

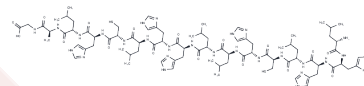
Formula: C83H128N28O17S2

Molecular Weight: 1854.21

Keep away from moisture

Storage: Powder: -20°C for 3 years | In solvent: -80°C for 1 year

Actual storage temperature shall be subject to the COA.



Biological Description

Description

LH2 peptide is a pH-responsive, cell-penetrating peptide dimer with the amino acid sequence LHHLCHLLHHLCHLAG. It increases uptake in tumor cells in slightly acidic environments (such as the tumor microenvironment) through histidine residue protonation (pKa approximately 6). When conjugated with the anticancer agent paclitaxel to form PTX-LH2, it demonstrates superior tumor inhibition compared to paclitaxel alone in a subcutaneous breast tumor model. LH2 peptide holds promise as a delivery vector for cancer research.

Preparing Stock Solutions

	1mg	5mg	10mg
1 mM	0.5393 mL	2.6966 mL	5.3931 mL
5 mM	0.1079 mL	0.5393 mL	1.0786 mL
10 mM	0.0539 mL	0.2697 mL	0.5393 mL
50 mM	0.0108 mL	0.0539 mL	0.1079 mL

Please select the appropriate solvent to prepare the stock solution, according to the solubility of the product in different solvents. Please use it as soon as possible.

Note: The dilution table applies only to solid products. For liquid products, please calculate the stock solution based on the stated concentration and/or density.

Inhibitor · Natural Compounds · Compound Libraries · Recombinant Proteins

This product is for Research Use Only · Not for Human or Veterinary or Therapeutic Use

Tel: 781-999-4286

E_mail: info@targetmol.com

Address: 34 Washington Street, Wellesley Hills, MA 02481