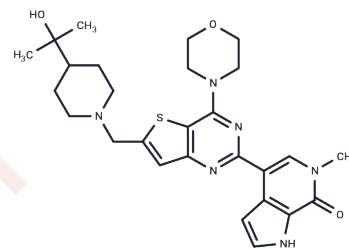


## PI3Kδ/BET-IN-1

## Chemical Properties

|                   |   |
|-------------------|---|
| CAS No. :         | 3054869-10-9  |
| Formula:          | C <sub>27</sub> H <sub>34</sub> N <sub>6</sub> O <sub>3</sub> S   |
| Molecular Weight: | 522.662   |
| Storage:          | Powder: -20°C for 3 years   In solvent: -80°C for 1 year<br>Actual storage temperature shall be subject to the COA. |



## Biological Description

|                            |   |
|----------------------------|---|
| Description                | PI3Kδ/BET-IN-1 (compound 10b) exhibits excellent and balanced activity against PI3Kδ (IC <sub>50</sub> = 112 nM) and BRD4-BD1 (IC <sub>50</sub> = 19 nM), while also demonstrating strong antiproliferative effects in DLBCL cells. |
| Targets(IC <sub>50</sub> ) | Epigenetic Reader Domain,PI3K   |

## Preparing Stock Solutions

|       | 1mg       | 5mg       | 10mg       |
|-------|-----------|-----------|------------|
| 1 mM  | 1.9133 mL | 9.5664 mL | 19.1329 mL |
| 5 mM  | 0.3827 mL | 1.9133 mL | 3.8266 mL  |
| 10 mM | 0.1913 mL | 0.9566 mL | 1.9133 mL  |
| 50 mM | 0.0383 mL | 0.1913 mL | 0.3827 mL  |

Please select the appropriate solvent to prepare the stock solution, according to the solubility of the product in different solvents. Please use it as soon as possible.

Note: The dilution table applies only to solid products. For liquid products, please calculate the stock solution based on the stated concentration and/or density.

**Inhibitor · Natural Compounds · Compound Libraries · Recombinant Proteins**

This product is for Research Use Only· Not for Human or Veterinary or Therapeutic Use

Tel:781-999-4286 E\_mail:info@targetmol.com Address:34 Washington Street,Wellesley Hills,MA 02481