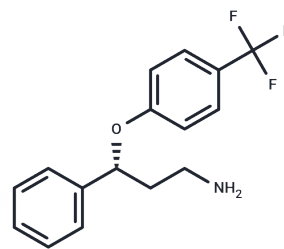


## (R)-Norfluoxetine

## Chemical Properties

|                   |   |
|-------------------|---|
| CAS No. :         | 130194-43-3   |
| Formula:          | C <sub>16</sub> H <sub>16</sub> F <sub>3</sub> NO   |
| Molecular Weight: | 295.299   |
| Storage:          | Powder: -20°C for 3 years   In solvent: -80°C for 1 year<br>Actual storage temperature shall be subject to the COA. |



## Biological Description

|               |  |
|---------------|--|
| Description   | (R)-Norfluoxetine is the (R)-enantiomer of Norfluoxetine. It functions as a potent serotonin reuptake inhibitor, with a $K_i$ value of 13 nM. This compound is utilized in the research of depression. |
| Targets(IC50) | Serotonin Transporter  |

## Preparing Stock Solutions

|       | 1mg       | 5mg        | 10mg       |
|-------|-----------|------------|------------|
| 1 mM  | 3.3864 mL | 16.9319 mL | 33.8639 mL |
| 5 mM  | 0.6773 mL | 3.3864 mL  | 6.7728 mL  |
| 10 mM | 0.3386 mL | 1.6932 mL  | 3.3864 mL  |
| 50 mM | 0.0677 mL | 0.3386 mL  | 0.6773 mL  |

Please select the appropriate solvent to prepare the stock solution, according to the solubility of the product in different solvents. Please use it as soon as possible.

Note: The dilution table applies only to solid products. For liquid products, please calculate the stock solution based on the stated concentration and/or density.

Inhibitor · Natural Compounds · Compound Libraries · Recombinant Proteins

This product is for Research Use Only · Not for Human or Veterinary or Therapeutic Use

Tel: 781-999-4286 E\_mail: info@targetmol.com Address: 34 Washington Street, Wellesley Hills, MA 02481