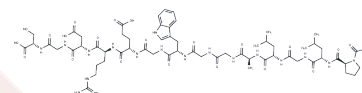


GPLGLAGGWGERDGS

Chemical Properties

CAS No. : 1449337-90-9
 Formula: C61H93N19O21
 Molecular Weight: 1428.51
 Storage: Keep away from moisture
 Powder: -20°C for 3 years | In solvent: -80°C for 1 year
 Actual storage temperature shall be subject to the COA.



Biological Description

Description	GPLGLAGGWGERDGS is a polypeptide with MMP enzyme responsiveness and tumor-targeting properties, suitable for research on enzyme-guided nanoparticle assembly within tumors.
Targets(IC50)	MMP

Preparing Stock Solutions

	1mg	5mg	10mg
1 mM	0.700 mL	3.5002 mL	7.0003 mL
5 mM	0.140 mL	0.700 mL	1.4001 mL
10 mM	0.070 mL	0.350 mL	0.700 mL
50 mM	0.014 mL	0.070 mL	0.140 mL

Please select the appropriate solvent to prepare the stock solution, according to the solubility of the product in different solvents. Please use it as soon as possible.

Note: The dilution table applies only to solid products. For liquid products, please calculate the stock solution based on the stated concentration and/or density.

Inhibitor · Natural Compounds · Compound Libraries · Recombinant Proteins

This product is for Research Use Only · Not for Human or Veterinary or Therapeutic Use

Tel: 781-999-4286 E_mail: info@targetmol.com Address: 34 Washington Street, Wellesley Hills, MA 02481