

## H-Glu-Pro-Leu-Gln-Leu-Lys-Met-OH acetate

### Chemical Properties

CAS No. :

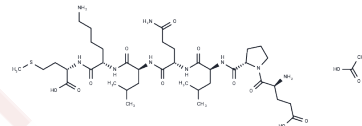
Formula: C40H71N9O13S

Molecular Weight: 918.109

Keep away from moisture

Storage: Powder: -20°C for 3 years | In solvent: -80°C for 1 year

Actual storage temperature shall be subject to the COA.



### Biological Description

Description	H-Glu-Pro-Leu-Gln-Leu-Lys-Met-OH (EM7) acetate is a linear mesenchymal stem cell (MSC) specific peptide. It can be utilized in the preparation of Gd-DOTA-peptide complexes.
Targets(IC50)	Others

### Preparing Stock Solutions

	1mg	5mg	10mg
1 mM	1.0892 mL	5.446 mL	10.8919 mL
5 mM	0.2178 mL	1.0892 mL	2.1784 mL
10 mM	0.1089 mL	0.5446 mL	1.0892 mL
50 mM	0.0218 mL	0.1089 mL	0.2178 mL

Please select the appropriate solvent to prepare the stock solution, according to the solubility of the product in different solvents. Please use it as soon as possible.

Note: The dilution table applies only to solid products. For liquid products, please calculate the stock solution based on the stated concentration and/or density.

**Inhibitor · Natural Compounds · Compound Libraries · Recombinant Proteins**

This product is for Research Use Only · Not for Human or Veterinary or Therapeutic Use

Tel: 781-999-4286 E\_mail: info@targetmol.com Address: 34 Washington Street, Wellesley Hills, MA 02481