

HL22

Chemical Properties

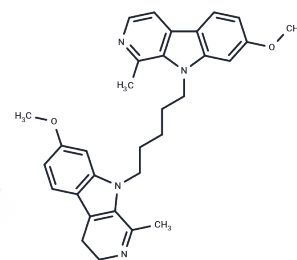
CAS No. :

Formula: C₃₁H₃₄N₄O₂

Molecular Weight: 494.627

Storage: Powder: -20°C for 3 years | In solvent: -80°C for 1 year

Actual storage temperature shall be subject to the COA.



Biological Description

Description

HL22 is a derivative of harmine. It exhibits significant inhibitory effects on three cancer cell lines: HCT116, MGC803, and MCF7. Moreover, HL22 can impede the migration and colony formation of MGC803 cells. Its anticancer mechanism is associated with multiple metabolic pathways and can be utilized for tumor research.

Preparing Stock Solutions

	1mg	5mg	10mg
1 mM	2.0217 mL	10.1086 mL	20.2171 mL
5 mM	0.4043 mL	2.0217 mL	4.0434 mL
10 mM	0.2022 mL	1.0109 mL	2.0217 mL
50 mM	0.0404 mL	0.2022 mL	0.4043 mL

Please select the appropriate solvent to prepare the stock solution, according to the solubility of the product in different solvents. Please use it as soon as possible.

Note: The dilution table applies only to solid products. For liquid products, please calculate the stock solution based on the stated concentration and/or density.

Inhibitor · Natural Compounds · Compound Libraries · Recombinant Proteins

This product is for Research Use Only · Not for Human or Veterinary or Therapeutic Use

Tel: 781-999-4286

E_mail: info@targetmol.com

Address: 34 Washington Street, Wellesley Hills, MA 02481