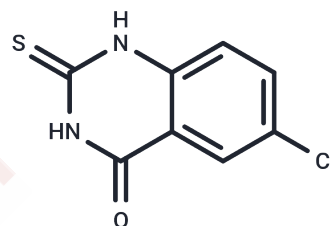


SMase-IN-1

Chemical Properties

CAS No. :	33017-85-5
Formula:	C ₈ H ₅ ClN ₂ O ₂ S
Molecular Weight:	212.656
Storage:	Powder: -20°C for 3 years In solvent: -80°C for 1 year Actual storage temperature shall be subject to the COA.



Biological Description

Description	SMase-IN-1 (Compound 4) is a bacterial sphingomyelinase (SMase) inhibitor with an IC ₅₀ value of 6.43 μM against Bacillus cereus SMase. It also inhibits eqBuChE with an inhibition rate of 59.50% at a concentration of 50 μM. SMase-IN-1 forms a complex with Cu ²⁺ through bio-metal interactions and can inhibit hemolysis of sheep red blood cells induced by Bacillus cereus.
Targets(IC ₅₀)	Antibacterial, Cholinesterase (ChE), Phospholipase

Preparing Stock Solutions

	1mg	5mg	10mg
1 mM	4.7023 mL	23.5117 mL	47.0234 mL
5 mM	0.9405 mL	4.7023 mL	9.4047 mL
10 mM	0.4702 mL	2.3512 mL	4.7023 mL
50 mM	0.094 mL	0.4702 mL	0.9405 mL

Please select the appropriate solvent to prepare the stock solution, according to the solubility of the product in different solvents. Please use it as soon as possible.

Note: The dilution table applies only to solid products. For liquid products, please calculate the stock solution based on the stated concentration and/or density.

Inhibitor · Natural Compounds · Compound Libraries · Recombinant Proteins

This product is for Research Use Only · Not for Human or Veterinary or Therapeutic Use

Tel: 781-999-4286 E_mail: info@targetmol.com Address: 34 Washington Street, Wellesley Hills, MA 02481