

LSD1-IN-38

Chemical Properties

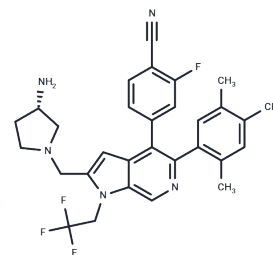
CAS No. :

Formula: C30H29F4N5

Molecular Weight: 535.578

Storage: Powder: -20°C for 3 years | In solvent: -80°C for 1 year

Actual storage temperature shall be subject to the COA.



Biological Description

Description	LSD1-IN-38 (Compound 23e) is a reversible, orally active inhibitor of lysine-specific demethylase 1 (LSD1), with an IC50 of 1.2 nM. It effectively inhibits the proliferation of cancer cells MV4-11, Kasumi-1, and NCI-H526 with IC50 values of 5, 4, and 11 nM, respectively. Furthermore, LSD1-IN-38 activates CD86 expression with an EC50 of 0.034 μM and induces differentiation in MV4-11 cells. In mouse models, this compound demonstrates antitumor activity.
Targets(IC50)	Histone Demethylase

Preparing Stock Solutions

	1mg	5mg	10mg
1 mM	1.8671 mL	9.3357 mL	18.6713 mL
5 mM	0.3734 mL	1.8671 mL	3.7343 mL
10 mM	0.1867 mL	0.9336 mL	1.8671 mL
50 mM	0.0373 mL	0.1867 mL	0.3734 mL

Please select the appropriate solvent to prepare the stock solution, according to the solubility of the product in different solvents. Please use it as soon as possible.

Note: The dilution table applies only to solid products. For liquid products, please calculate the stock solution based on the stated concentration and/or density.

Inhibitor · Natural Compounds · Compound Libraries · Recombinant Proteins

This product is for Research Use Only · Not for Human or Veterinary or Therapeutic Use

Tel:781-999-4286

E_mail:info@targetmol.com

Address:34 Washington Street,Wellesley Hills,MA 02481