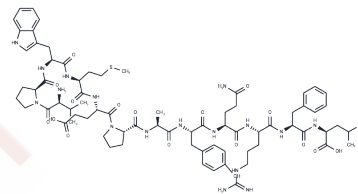


## P160 peptide

## Chemical Properties

CAS No. :	362043-77-4
Formula:	C74H105N17O17S
Molecular Weight:	1536.79
Storage:	Keep away from moisture Powder: -20°C for 3 years   In solvent: -80°C for 1 year <small>Actual storage temperature shall be subject to the COA.</small>



## Biological Description

Description	P160 peptide is a breast cancer-targeting peptide that binds to the keratin 1 (KRT1) receptor in breast cancer cells, with a Kd of approximately 1.1 $\mu$ M. It shows significant potential for targeted drug delivery to breast cancer cells. P160 peptide enhances the cellular uptake and anticancer activity of the pro-apoptotic antimicrobial peptide MccJ25 (microcin J25). It is applicable in cancer research studies.
Targets(IC50)	Microtubule Associated

## Preparing Stock Solutions

	1mg	5mg	10mg
1 mM	0.6507 mL	3.2535 mL	6.5071 mL
5 mM	0.1301 mL	0.6507 mL	1.3014 mL
10 mM	0.0651 mL	0.3254 mL	0.6507 mL
50 mM	0.013 mL	0.0651 mL	0.1301 mL

Please select the appropriate solvent to prepare the stock solution, according to the solubility of the product in different solvents. Please use it as soon as possible.

Note: The dilution table applies only to solid products. For liquid products, please calculate the stock solution based on the stated concentration and/or density.

Inhibitor · Natural Compounds · Compound Libraries · Recombinant Proteins

This product is for Research Use Only · Not for Human or Veterinary or Therapeutic Use

Tel: 781-999-4286 E\_mail: info@targetmol.com Address: 34 Washington Street, Wellesley Hills, MA 02481