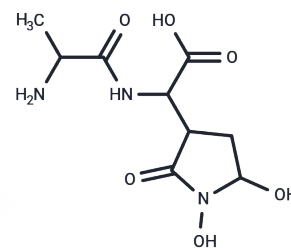


## Alahopcin

## Chemical Properties

|                   |   |
|-------------------|---|
| CAS No. :         | 82576-50-9  |
| Formula:          | C <sub>9</sub> H <sub>15</sub> N <sub>3</sub> O <sub>6</sub>  |
| Molecular Weight: | 261.234   |
| Storage:          | Powder: -20°C for 3 years   In solvent: -80°C for 1 year<br>Actual storage temperature shall be subject to the COA. |



## Biological Description

|               |   |
|---------------|---|
| Description   | Alahopcin is a new dipeptide antibiotic generated by <i>Streptomyces albulus</i> subsp. <i>ochragerus</i> subsp. nov. |
| Targets(IC50) | Others, Antibacterial, Antibiotic   |

## Preparing Stock Solutions

|       | 1mg       | 5mg        | 10mg       |
|-------|-----------|------------|------------|
| 1 mM  | 3.828 mL  | 19.1402 mL | 38.2804 mL |
| 5 mM  | 0.7656 mL | 3.828 mL   | 7.6561 mL  |
| 10 mM | 0.3828 mL | 1.914 mL   | 3.828 mL   |
| 50 mM | 0.0766 mL | 0.3828 mL  | 0.7656 mL  |

Please select the appropriate solvent to prepare the stock solution, according to the solubility of the product in different solvents. Please use it as soon as possible.

Note: The dilution table applies only to solid products. For liquid products, please calculate the stock solution based on the stated concentration and/or density.

## Reference

- Horii S, Fukase H, Higashide E, Yoneda M, Nishida H, Sakai H, Hirota A, Isogai A. Structure of alahopcin (nourseimycin), a new dipeptide antibiotic. *J Antibiot (Tokyo)*. 1985 Mar;38(3):302-11. PubMed PMID: 3839223.
- Higashide E, Horii S, Ono H, Mizokami N, Yamazaki T, Shibata M, Yoneda M. Alahopcin, a new dipeptide antibiotic produced by *Streptomyces albulus* subsp. *ochragerus* subsp. nov. *J Antibiot (Tokyo)*. 1985 Mar;38(3):285-95. PubMed PMID: 3839222.
- Higashide E, Kanamaru T, Fukase H, Horii S. Isolation of dealanylalahopcin, a new amino acid, and its biological activity. *J Antibiot (Tokyo)*. 1985 Mar;38(3):296-301. PubMed PMID: 4008327.

**Inhibitor · Natural Compounds · Compound Libraries · Recombinant Proteins**

This product is for Research Use Only · Not for Human or Veterinary or Therapeutic Use

Tel:781-999-4286 E\_mail:info@targetmol.com Address:34 Washington Street,Wellesley Hills,MA 02481