

## AGPS-IN-2i

## Chemical Properties

CAS No. : 2316782-88-2

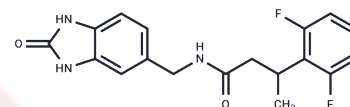
Formula: C<sub>18</sub>H<sub>17</sub>F<sub>2</sub>N<sub>3</sub>O<sub>2</sub>

Molecular Weight: 345.34

Store at low temperature

Storage: Powder: -20°C for 3 years | In solvent: -80°C for 1 year

Actual storage temperature shall be subject to the COA.



## Biological Description

Description	AGPS-IN-2i is a potent and high-affinity inhibitor of alkylglycerol phosphate synthase that controls ether lipid utilization and metabolism in cells, reduces ether lipid levels and cell migration, and promotes proliferation and motility of cancer cells. AGPS-IN-2i had an inhibitory effect on cancer cell proliferation.
Targets(IC50)	MMP,Others
In vitro	AGPS-IN-2i (2i) (500 μM ; 24 h) reduced ether lipids levels and cell migration rate In 231MFP cancer cells.[1] 2i (50、100 μM ; 24 h) specifically impaired epithelial to mesenchymal transition (EMT) by modulating E-cadherin, Snail, and MMP2 expression levels in PC-3 and MDA-MB-231 cancer cells.[1]

## Solubility Information

Solubility	DMSO: 22.5 mg/mL (65.15 mM),Sonication is recommended. (< 1 mg/ml refers to the product slightly soluble or insoluble)
------------	---

## Preparing Stock Solutions

	1mg	5mg	10mg
1 mM	2.8957 mL	14.4785 mL	28.957 mL
5 mM	0.5791 mL	2.8957 mL	5.7914 mL
10 mM	0.2896 mL	1.4478 mL	2.8957 mL
50 mM	0.0579 mL	0.2896 mL	0.5791 mL

Please select the appropriate solvent to prepare the stock solution, according to the solubility of the product in different solvents. Please use it as soon as possible.

Note: The dilution table applies only to solid products. For liquid products, please calculate the stock solution based on the stated concentration and/or density.

Reference

Stazi G, et al. Development of alkyl glycerone phosphate synthase inhibitors: Structure-activity relationship and effects on ether lipids and epithelial-mesenchymal transition in cancer cells. Eur J Med Chem. 2019 ; 163:722-735.

**Inhibitor · Natural Compounds · Compound Libraries · Recombinant Proteins**

This product is for Research Use Only· Not for Human or Veterinary or Therapeutic Use

Tel:781-999-4286 E\_mail:info@targetmol.com Address:34 Washington Street,Wellesley Hills,MA 02481