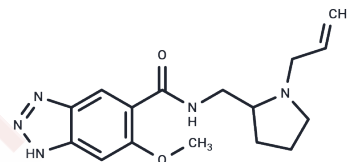


## Alizapride

## Chemical Properties

|                   |   |
|-------------------|---|
| CAS No. :         | 59338-93-1  |
| Formula:          | C <sub>16</sub> H <sub>21</sub> N <sub>5</sub> O <sub>2</sub>   |
| Molecular Weight: | 315.37  |
| Storage:          | Powder: -20°C for 3 years   In solvent: -80°C for 1 year<br>Actual storage temperature shall be subject to the COA. |



## Biological Description

|               |  |
|---------------|--|
| Description   | Alizapride is an antagonist of dopamine receptor. Alizapride can be used in human digestive disorders which is a potent antiemetic [1] [3].  |
| Targets(IC50) | Others,Dopamine Receptor   |
| In vivo       | Alizapride administered subcutaneously at dosages of 2.5, 5, 10, and 25 µg/kg for 7 consecutive days in male Duncan-Hartley guinea pigs significantly decreased the clearance of IgG-sensitized erythrocytes by splenic macrophages [2]. This reduction highlights alizapride's potential impact on the interaction between splenic macrophages and IgG-sensitized red blood cells (RBCs). |

## Preparing Stock Solutions

|       | 1mg       | 5mg        | 10mg       |
|-------|-----------|------------|------------|
| 1 mM  | 3.1709 mL | 15.8544 mL | 31.7088 mL |
| 5 mM  | 0.6342 mL | 3.1709 mL  | 6.3418 mL  |
| 10 mM | 0.3171 mL | 1.5854 mL  | 3.1709 mL  |
| 50 mM | 0.0634 mL | 0.3171 mL  | 0.6342 mL  |

Please select the appropriate solvent to prepare the stock solution, according to the solubility of the product in different solvents. Please use it as soon as possible.

Note: The dilution table applies only to solid products. For liquid products, please calculate the stock solution based on the stated concentration and/or density.

**Inhibitor · Natural Compounds · Compound Libraries · Recombinant Proteins**

This product is for Research Use Only · Not for Human or Veterinary or Therapeutic Use

Tel:781-999-4286 E\_mail:info@targetmol.com Address:34 Washington Street,Wellesley Hills,MA 02481