

CYP2A6-IN-1

Chemical Properties

CAS No. : 912291-11-3

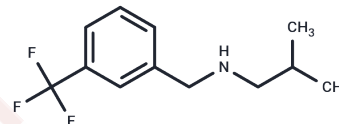
Formula: C₁₂H₁₆F₃N

Molecular Weight: 231.26

Pure form: -20°C for 3 years | In solvent: -80°C for 1

Storage: year

Actual storage temperature shall be subject to the COA.



Biological Description

Description	(2-methylpropyl)(([3-(trifluoromethyl)phenyl]methyl)amine is a selective serotonin receptor agonist that specifically targets 5-HT _{2A} and 5-HT _{2C} receptors. It has been used to study the role of serotonin in a variety of physiologic and pathologic conditions.
Targets(IC50)	Others,Cytochromes P450

Solubility Information

Solubility	DMSO: 50 mg/mL (216.21 mM),Sonication is recommended. (< 1 mg/ml refers to the product slightly soluble or insoluble)
------------	--

Preparing Stock Solutions

	1mg	5mg	10mg
1 mM	4.3241 mL	21.6207 mL	43.2414 mL
5 mM	0.8648 mL	4.3241 mL	8.6483 mL
10 mM	0.4324 mL	2.1621 mL	4.3241 mL
50 mM	0.0865 mL	0.4324 mL	0.8648 mL

Please select the appropriate solvent to prepare the stock solution, according to the solubility of the product in different solvents. Please use it as soon as possible.

Note: The dilution table applies only to solid products. For liquid products, please calculate the stock solution based on the stated concentration and/or density.

Inhibitor · Natural Compounds · Compound Libraries · Recombinant Proteins

This product is for Research Use Only· Not for Human or Veterinary or Therapeutic Use

Tel:781-999-4286

E_mail:info@targetmol.com

Address:34 Washington Street,Wellesley Hills,MA 02481