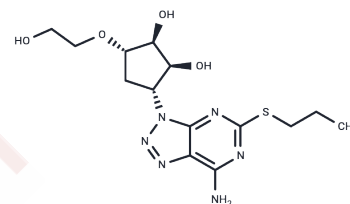


## Ticagrelor metabolite M5

## Chemical Properties

CAS No. :	1251765-07-7
Formula:	C <sub>14</sub> H <sub>22</sub> N <sub>6</sub> O <sub>4</sub> S
Molecular Weight:	370.43
Storage:	Powder: -20°C for 3 years   In solvent: -80°C for 1 year Actual storage temperature shall be subject to the COA.



## Biological Description

Description	Ticagrelor metabolite M5 (T437700) is a metabolite of Ticagrelor, the first reversible oral antagonist of P2Y <sub>12</sub> receptor. Compared to Clopidogrel, Ticagrelor has faster and more consistent inhibition on ADP-receptors. Ticagrelor is used in the treatment of acute coronary syndromes (ACS).
Targets(IC50)	Others, Drug Metabolite, P2Y Receptor

## Solubility Information

Solubility	DMSO: 50 mg/mL (134.98 mM), Sonication is recommended. (< 1 mg/ml refers to the product slightly soluble or insoluble)
------------	---------------------------------------------------------------------------------------------------------------------------

## Preparing Stock Solutions

	1mg	5mg	10mg
1 mM	2.6996 mL	13.4978 mL	26.9957 mL
5 mM	0.5399 mL	2.6996 mL	5.3991 mL
10 mM	0.270 mL	1.3498 mL	2.6996 mL
50 mM	0.054 mL	0.270 mL	0.5399 mL

Please select the appropriate solvent to prepare the stock solution, according to the solubility of the product in different solvents. Please use it as soon as possible.

Note: The dilution table applies only to solid products. For liquid products, please calculate the stock solution based on the stated concentration and/or density.

## Reference

Teng R, Oliver S, Hayes MA, Butler K. Absorption, distribution, metabolism, and excretion of ticagrelor in healthy subjects. Drug Metab Dispos. 2010 Sep;38(9):1514-21. doi: 10.1124/dmd.110.032250. Epub 2010 Jun 15. PubMed PMID: 20551239.

**Inhibitor · Natural Compounds · Compound Libraries · Recombinant Proteins**

This product is for Research Use Only · Not for Human or Veterinary or Therapeutic Use

Tel:781-999-4286 E\_mail:info@targetmol.com Address:34 Washington Street,Wellesley Hills,MA 02481