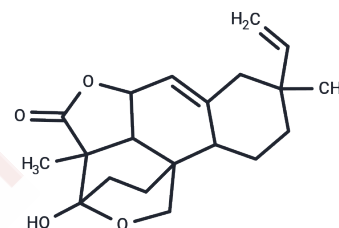


## Momilacton B

## Chemical Properties

CAS No. :	51415-08-8
Formula:	C <sub>20</sub> H <sub>26</sub> O <sub>4</sub>
Molecular Weight:	330.42
Storage:	Keep away from direct sunlight Powder: -20°C for 3 years   In solvent: -80°C for 1 year <small>Actual storage temperature shall be subject to the COA.</small>



## Biological Description

Description	Momilacton B is a natural product and plant antitoxin discovered in <i>Oryza sativa</i> L. It exhibits cytotoxic activity against human colon cancer HT-29 and SW620 cells and inhibits $\alpha$ -Amylase and $\alpha$ -Glucosidase (IC <sub>50</sub> = 146.85/612.03 $\mu$ g/mL).
Targets(IC <sub>50</sub> )	Glucosidase,Amylase
In vitro	Momilacton B (0/0.5/1/5 $\mu$ M; 72 hours) increased cellular damage by 20-30% in HT-29 and SW620 cells compared to controls[1]. Momilacton B (0/0.5/1/5/10 $\mu$ M; 24 hours) increased cell viability by 20-30% in HT-29 and SW620 cells compared to controls [1].

## Preparing Stock Solutions

	1mg	5mg	10mg
1 mM	3.0265 mL	15.1323 mL	30.2645 mL
5 mM	0.6053 mL	3.0265 mL	6.0529 mL
10 mM	0.3026 mL	1.5132 mL	3.0265 mL
50 mM	0.0605 mL	0.3026 mL	0.6053 mL

Please select the appropriate solvent to prepare the stock solution, according to the solubility of the product in different solvents. Please use it as soon as possible.

Note: The dilution table applies only to solid products. For liquid products, please calculate the stock solution based on the stated concentration and/or density.

## Reference

Kim SJ, et al. Cytotoxic and antitumor activity of momilactone B from rice hulls. *J Agric Food Chem.* 2007;55(5): 1702-1706.

Quan NV, et al. Momilactones A and B Are  $\alpha$ -Amylase and  $\alpha$ -Glucosidase Inhibitors. *Molecules.* 2019;24(3):482. Published 2019 Jan 29.

**Inhibitor · Natural Compounds · Compound Libraries · Recombinant Proteins**

This product is for Research Use Only · Not for Human or Veterinary or Therapeutic Use

Tel:781-999-4286 E\_mail:info@targetmol.com Address:34 Washington Street,Wellesley Hills,MA 02481