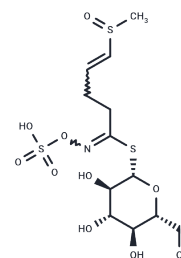


## Glucoraphenin

## Chemical Properties

CAS No. :	28463-24-3
Formula:	C <sub>12</sub> H <sub>21</sub> NO <sub>10</sub> S <sub>3</sub>
Molecular Weight:	435.48
Storage:	Keep away from direct sunlight, Keep away from moisture Powder: -20°C for 3 years   In solvent: -80°C for 1 year <small>Actual storage temperature shall be subject to the COA.</small>



## Biological Description

Description	Glucoraphenin is a natural product isolated from <i>Raphanus sativus</i> , suitable for biochemical assays and medicinal chemistry research.
Targets(IC50)	Others

## Preparing Stock Solutions

	1mg	5mg	10mg
1 mM	2.2963 mL	11.4816 mL	22.9632 mL
5 mM	0.4593 mL	2.2963 mL	4.5926 mL
10 mM	0.2296 mL	1.1482 mL	2.2963 mL
50 mM	0.0459 mL	0.2296 mL	0.4593 mL

Please select the appropriate solvent to prepare the stock solution, according to the solubility of the product in different solvents. Please use it as soon as possible.

Note: The dilution table applies only to solid products. For liquid products, please calculate the stock solution based on the stated concentration and/or density.

**Inhibitor · Natural Compounds · Compound Libraries · Recombinant Proteins**

This product is for Research Use Only · Not for Human or Veterinary or Therapeutic Use

Tel: 781-999-4286 E\_mail: info@targetmol.com Address: 34 Washington Street, Wellesley Hills, MA 02481