

TAPI1 acetate

Chemical Properties

CAS No. :

Formula: C28H41N5O7

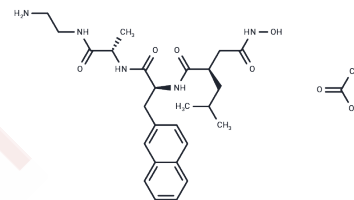
Molecular Weight: 559.65

Storage:

Keep away from direct sunlight, Keep away from moisture, Store at low temperature

Powder: -20°C for 3 years | In solvent: -80°C for 1 year

Actual storage temperature shall be subject to the COA.



Biological Description

Description	TAPI1 acetate is a salt form of TAPI1. TAPI1 (TNF- α processing inhibitor-1) is a TACE (ADAM17) inhibitor that inhibits shedding of TNF- α , TNFRI (p60), and TNFRII (p80), IL-6 other cytokine receptors; TAPI-1 is also a metalloproteinase MMP inhibitor that promotes cisplatin-induced ESCC cell apoptosis by inhibiting the NF- κ B signaling pathway to promote cisplatin-induced apoptosis in ESCC cells.
Targets(IC50)	MMP
In vitro	Methods: HK2 cells were pretreated with TAPI1 acetate (1 μ M for 30 minutes) and then treated with 10 μ g/ml LPS for 8 hours. Cell viability was measured by CCK8. Results: TAPI1 acetate increased the cell viability of HK-2 cells treated with LPS. [1]

Preparing Stock Solutions

	1mg	5mg	10mg
1 mM	1.7868 mL	8.9342 mL	17.8683 mL
5 mM	0.3574 mL	1.7868 mL	3.5737 mL
10 mM	0.1787 mL	0.8934 mL	1.7868 mL
50 mM	0.0357 mL	0.1787 mL	0.3574 mL

Please select the appropriate solvent to prepare the stock solution, according to the solubility of the product in different solvents. Please use it as soon as possible.

Note: The dilution table applies only to solid products. For liquid products, please calculate the stock solution based on the stated concentration and/or density.

Reference

Bae EH, et al. Tumor necrosis factor α -converting enzyme inhibitor attenuates lipopolysaccharide-induced reactive oxygen species and mitogen-activated protein kinase expression in human renal proximal tubule epithelial cells. Korean J Physiol Pharmacol. 2018 Mar;22(2):135-143.

Inhibitor · Natural Compounds · Compound Libraries · Recombinant Proteins

This product is for Research Use Only · Not for Human or Veterinary or Therapeutic Use

Tel:781-999-4286 E_mail:info@targetmol.com Address:34 Washington Street,Wellesley Hills,MA 02481