

AU-15330

Chemical Properties

CAS No. : 2380274-50-8

Formula: C39H49N9O5S

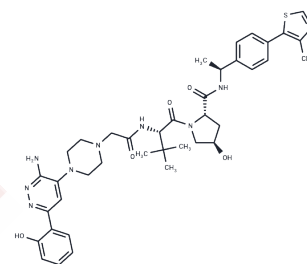
Molecular Weight: 755.93

Keep away from direct sunlight, Store at low temperature

Storage:

Powder: -20°C for 3 years | In solvent: -80°C for 1 year

Actual storage temperature shall be subject to the COA.



Biological Description

Description	AU-15330 is a proteolytic targeting chimera (PROTAC) that simultaneously targets SMARCA4, SMARCA2, and PBRM1 for degradation and exhibits cytotoxicity in H3.3K27M cells but not in H3 wild-type cells. [2]
Targets(IC50)	Epigenetic Reader Domain, PROTACs
In vitro	METHODS: PCa cells (LNCaP, VCaP, 22RV1, and LAPC4) were treated with different concentrations of AU-15330 (0.1, 1 μ M). RESULTS AU-15330 attenuated the growth of these cells and induced apoptotic cell death, while having no antiproliferative effect on benign or non-neoplastic prostate cells. [1]
In vivo	METHODS: AU-15330 (60 mg/kg, i.v.) was administered to mice bearing VCaP and C4-2B castration-resistant tumor models, 3 days per week. RESULTS AU-15330 inhibited tumor growth in mice bearing VCaP and C4-2B castration-resistant tumor models without significant toxicity. [1]

Solubility Information

Solubility	DMSO: 252.5 mg/mL (334.03 mM), Sonication is recommended. (< 1 mg/ml refers to the product slightly soluble or insoluble)
In vivo Formulation	10% DMSO+40% PEG300+5% Tween 80+45% Saline: 5 mg/mL (6.61 mM), Sonication is recommended. <i>Please add the solvents sequentially, clarifying the solution as much as possible before adding the next one. Dissolve by heating and/or sonication if necessary. Working solution is recommended to be prepared and used immediately. The formulation provided above is for reference purposes only. In vivo formulations may vary and should be modified based on specific experimental conditions.</i>

Preparing Stock Solutions

	1mg	5mg	10mg
1 mM	1.3229 mL	6.6144 mL	13.2287 mL
5 mM	0.2646 mL	1.3229 mL	2.6457 mL
10 mM	0.1323 mL	0.6614 mL	1.3229 mL
50 mM	0.0265 mL	0.1323 mL	0.2646 mL

Please select the appropriate solvent to prepare the stock solution, according to the solubility of the product in different solvents. Please use it as soon as possible.

Note: The dilution table applies only to solid products. For liquid products, please calculate the stock solution based on the stated concentration and/or density.

Reference

Xiao L, et al. Targeting SWI/SNF ATPases in enhancer-addicted prostate cancer. *Nature*. 2022 Jan;601(7893):434-439.

Mota M, et al. Targeting SWI/SNF ATPases in H3.3K27M diffuse intrinsic pontine gliomas. *Proc Natl Acad Sci U S A*. 2023 May 2;120(18):e2221175120.

Inhibitor · Natural Compounds · Compound Libraries · Recombinant Proteins

This product is for Research Use Only · Not for Human or Veterinary or Therapeutic Use

Tel:781-999-4286 E_mail:info@targetmol.com Address:34 Washington Street,Wellesley Hills,MA 02481