

(+)-Isomenthone**Chemical Properties**

CAS No. : 1196-31-2

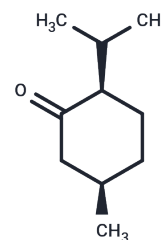
Formula: C₁₀H₁₈O

Molecular Weight: 154.25

Store at low temperature

Storage: Pure form: -20°C for 3 years | In solvent: -80°C for 1 year

Actual storage temperature shall be subject to the COA.

**Biological Description**

Description	(+)-Isomenthone, an isomer of L-Menthone, is a compound isolated from <i>Ziziphora clinopodioides</i> Lam.
Targets(IC50)	Others

Preparing Stock Solutions

	1mg	5mg	10mg
1 mM	6.483 mL	32.4149 mL	64.8298 mL
5 mM	1.2966 mL	6.483 mL	12.966 mL
10 mM	0.6483 mL	3.2415 mL	6.483 mL
50 mM	0.1297 mL	0.6483 mL	1.2966 mL

Please select the appropriate solvent to prepare the stock solution, according to the solubility of the product in different solvents. Please use it as soon as possible.

Note: The dilution table applies only to solid products. For liquid products, please calculate the stock solution based on the stated concentration and/or density.

Reference

Zhang QH, et al. Essential oils and their compositions as spatial repellents for pestiferous social wasps. *Pest Manag Sci.* 2013 Apr;69(4):542-52.

XING Si-lei, et al. Essential Oil Compositions and Antioxidant Activities of Two *Ziziphora* Species in Xinjiang. *FOOD SCIENCE.* 2010, Vol. 31 Issue (7): 154-159.

Inhibitor · Natural Compounds · Compound Libraries · Recombinant Proteins

This product is for Research Use Only · Not for Human or Veterinary or Therapeutic Use

Tel:781-999-4286 E_mail:info@targetmol.com Address:34 Washington Street,Wellesley Hills,MA 02481