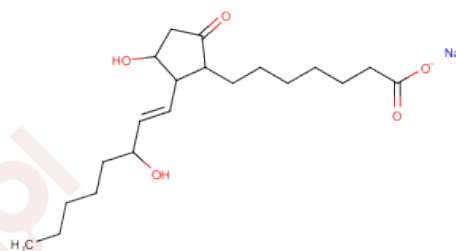


Alprostadil sodium

Chemical Properties

CAS No. :	27930-45-6
Formula:	C ₂₀ H ₃₃ NaO ₅
Molecular Weight:	376.46
Storage:	Powder: -20°C for 3 years In solvent: -80°C for 1 year Actual storage temperature shall be subject to the COA.



Biological Description

Description	Alprostadil sodium is a prostaglandin receptor ligand with K_i values of 36, 10, 1.1, 2.1, and 33 nM for EP1, EP2, EP3, EP4, and IP, respectively, in mice. It induces vasodilatation and inhibits platelet aggregation, and it can be used as a vasodilator for the study of peripheral vascular disease.
Targets(IC50)	Others, Prostaglandin Receptor

Preparing Stock Solutions

	1mg	5mg	10mg
1 mM	2.6563 mL	13.2816 mL	26.5632 mL
5 mM	0.5313 mL	2.6563 mL	5.3126 mL
10 mM	0.2656 mL	1.3282 mL	2.6563 mL
50 mM	0.0531 mL	0.2656 mL	0.5313 mL

Please select the appropriate solvent to prepare the stock solution, according to the solubility of the product in different solvents. Please use it as soon as possible.

Note: The dilution table applies only to solid products. For liquid products, please calculate the stock solution based on the stated concentration and/or density.

Reference

- McCluskey SV, Kirkham K, Munson JM. Stability of Alprostadil in 0.9% Sodium Chloride Stored in Polyvinyl Chloride Containers. *Int J Pharm Compd.* 2017 Mar-Apr;21(2):150-153. PubMed PMID: 28346210.
- Ossorio-García L, Jiménez-Gallo D, Arjona-Aguilera C, Linares-Barrios M. Multimodal Treatment of Calciphylaxis With Sodium Thiosulfate, Alprostadil, and Hyperbaric Oxygen Therapy. *Actas Dermosifiliogr.* 2016 Oct;107(8):695-7. doi: 10.1016/j.ad.2016.04.004. Epub 2016 May 18. English, Spanish. PubMed PMID: 27208908.
- Chen Y, Wan JX, Jiang DW, Fu BB, Cui J, Li GF. [Clinical efficacy and safety of sequential treatment with alprostadil and beraprost sodium for chronic renal failure induced by chronic glomerulonephritis]. *Nan Fang Yi Ke Da Xue Xue Bao.* 2013 Oct;33(10):1521-4. Chinese. PubMed PMID: 24144760.

Inhibitor · Natural Compounds · Compound Libraries · Recombinant Proteins

This product is for Research Use Only · Not for Human or Veterinary or Therapeutic Use

Tel:781-999-4286 E_mail:info@targetmol.com Address:34 Washington Street,Wellesley Hills,MA 02481