

## KDM2A/7A-IN-1

## Chemical Properties

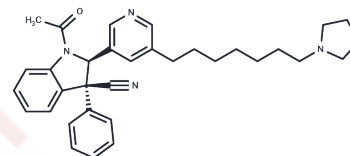
CAS No. : 2169272-46-0

Formula: C33H38N4O

Molecular Weight: 506.68

Storage: Powder: -20°C for 3 years | In solvent: -80°C for 1 year

Actual storage temperature shall be subject to the COA.



## Biological Description

Description	KDM2A/7A-IN-1 is a cell-permeable and selective inhibitor of histone lysine demethylase KDM2A/7A, with potential antitumor activity for studying duodenal adenomas and ossifying fibromuroid tumors.
Targets(IC50)	Histone Demethylase
In vitro	KDM2A/7A-IN-1 is a highly cell-permeable inhibitor of KDM2A/7A, with an IC50 of 0.16 $\mu$ M. KDM2A/7A-IN-1 (0.4, 3.1, 6.2 $\mu$ M) increases the level of H3K36me2 in HeLa cells with ectopic expression of catalytically active KDM2A[1].

## Solubility Information

Solubility	DMSO: 120 mg/mL (236.84 mM), Sonication is recommended. (< 1 mg/ml refers to the product slightly soluble or insoluble)
In vivo Formulation	10% DMSO+40% PEG300+5% Tween 80+45% Saline: 5 mg/mL (9.87 mM), Sonication is recommended. <i>Please add the solvents sequentially, clarifying the solution as much as possible before adding the next one. Dissolve by heating and/or sonication if necessary. Working solution is recommended to be prepared and used immediately. The formulation provided above is for reference purposes only. In vivo formulations may vary and should be modified based on specific experimental conditions.</i>

### Preparing Stock Solutions

---

	1mg	5mg	10mg
1 mM	1.9736 mL	9.8682 mL	19.7363 mL
5 mM	0.3947 mL	1.9736 mL	3.9473 mL
10 mM	0.1974 mL	0.9868 mL	1.9736 mL
50 mM	0.0395 mL	0.1974 mL	0.3947 mL

---

Please select the appropriate solvent to prepare the stock solution, according to the solubility of the product in different solvents. Please use it as soon as possible.

Note: The dilution table applies only to solid products. For liquid products, please calculate the stock solution based on the stated concentration and/or density.

### Reference

Gerken PA, et al. Discovery of a Highly Selective Cell-Active Inhibitor of the Histone Lysine Demethylases KDM2/7. *Angew Chem Int Ed Engl.* 2017 Dec 4;56(49):15555-15559.

**Inhibitor · Natural Compounds · Compound Libraries · Recombinant Proteins**

This product is for Research Use Only · Not for Human or Veterinary or Therapeutic Use

Tel:781-999-4286 E\_mail:info@targetmol.com Address:34 Washington Street,Wellesley Hills,MA 02481