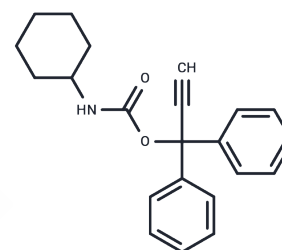


## Enpromate

## Chemical Properties

CAS No. :	10087-89-5
Formula:	C <sub>22</sub> H <sub>23</sub> NO <sub>2</sub>
Molecular Weight:	333.42
Storage:	Powder: -20°C for 3 years   In solvent: -80°C for 1 year Actual storage temperature shall be subject to the COA.



## Biological Description

Description	Enpromate is a synthetic acetyl carbamate, nitrogen mustard compound. It is an alkylating agent with antitumor activity.
Targets(IC50)	Others

## Preparing Stock Solutions

	1mg	5mg	10mg
1 mM	2.9992 mL	14.9961 mL	29.9922 mL
5 mM	0.5998 mL	2.9992 mL	5.9984 mL
10 mM	0.2999 mL	1.4996 mL	2.9992 mL
50 mM	0.060 mL	0.2999 mL	0.5998 mL

Please select the appropriate solvent to prepare the stock solution, according to the solubility of the product in different solvents. Please use it as soon as possible.

Note: The dilution table applies only to solid products. For liquid products, please calculate the stock solution based on the stated concentration and/or density.

## Reference

- Dunn RH, Rose KD, Rana RS, Kumar K, Sahni A, Smith T. New euprimate postcrania from the early Eocene of Gujarat, India, and the strepsirrhine-haplorhine divergence. *J Hum Evol.* 2016 Oct;99:25-51. doi: 10.1016/j.jhevol.2016.06.006. Epub 2016 Aug 7. PubMed PMID: 27650579.
- Ravosa MJ, Savakova DG. Euprimate origins: the eyes have it. *J Hum Evol.* 2004 Mar;46(3):357-64. PubMed PMID: 14984789.
- Rose KD, Chester SG, Dunn RH, Boyer DM, Bloch JI. New fossils of the oldest North American euprimate *Teilhardina brandti* (Omomyidae) from the paleocene-eocene thermal maximum. *Am J Phys Anthropol.* 2011 Oct;146(2):281-305. doi: 10.1002/ajpa.21579. Epub 2011 Aug 12. PubMed PMID: 21842495.
- Ni X, Wang Y, Hu Y, Li C. A euprimate skull from the early Eocene of China. *Nature.* 2004 Jan 1;427(6969):65-8. PubMed PMID: 14702085.

**Inhibitor · Natural Compounds · Compound Libraries · Recombinant Proteins**

This product is for Research Use Only · Not for Human or Veterinary or Therapeutic Use

Tel:781-999-4286 E\_mail:info@targetmol.com Address:34 Washington Street,Wellesley Hills,MA 02481