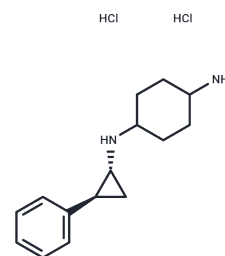


ORY1001

## Chemical Properties

CAS No. : 1431326-61-2  
 Formula: C<sub>15</sub>H<sub>22</sub>N<sub>2</sub>·2HCl  
 Molecular Weight: 303.27  
 Storage: Powder: -20°C for 3 years | In solvent: -80°C for 1 year  
 Actual storage temperature shall be subject to the COA.



## Biological Description

Description	ORY1001 (ORY 1001) is an orally active and selective lysine-specific demethylase LSD1/KDM1A inhibitor, with high selectivity against related FAD dependent aminoxidases with IC <sub>50</sub> of <20 nM.
Targets(IC <sub>50</sub> )	Histone Demethylase
In vitro	In THP-1 (MLL-AF9) cells, ORY-1001 results in a time/dose dependent me <sub>2</sub> H <sub>3</sub> K <sub>4</sub> accumulation at KDM1A target genes and concomitant induction of differentiation markers. ORY-1001 also induces apoptosis in THP-1 and inhibits proliferation and colony formation of MV(4;11) (MLL-AF4) cells. [1]
In vivo	In rodent MV(4;11) xenografts, ORY-1001 (<0.020 mg/kg, p.o.) leads to significantly reduced tumor growth. [1]

## Solubility Information

Solubility	DMSO: 7.81 mg/mL (25.75 mM),Sonication is recommended. Ethanol: 1 mg/mL (3.3 mM),Sonication is recommended. H <sub>2</sub> O: 56 mg/mL (184.65 mM),Sonication is recommended. (< 1 mg/ml refers to the product slightly soluble or insoluble)
------------	--

### Preparing Stock Solutions

---

	1mg	5mg	10mg
1 mM	3.2974 mL	16.487 mL	32.9739 mL
5 mM	0.6595 mL	3.2974 mL	6.5948 mL
10 mM	0.3297 mL	1.6487 mL	3.2974 mL
50 mM	0.0659 mL	0.3297 mL	0.6595 mL

---

Please select the appropriate solvent to prepare the stock solution, according to the solubility of the product in different solvents. Please use it as soon as possible.

Note: The dilution table applies only to solid products. For liquid products, please calculate the stock solution based on the stated concentration and/or density.

### Reference

Maes T, et al. J Clin Oncol. 2013, 31, suppl; abstr. e13543.

Barbagallo C, Caltabiano R, Broggi G, et al. LncRNA LINC00518 Acts as an Oncogene in Uveal Melanoma by Regulating an RNA-Based Network. Cancers. 2020, 12(12): 3867

Lv S, Zhao X, Zhang E, et al. Lysine demethylase KDM1A promotes cell growth via FKBP8-BCL2 axis in hepatocellular carcinoma. Journal of Biological Chemistry. 2022: 102374.

Barbagallo C, Caltabiano R, Broggi G, et al. LncRNA LINC00518 Acts as an Oncogene in Uveal Melanoma by Regulating an RNA-Based Network[J]. Cancers. 2020, 12(12): 3867

**Inhibitor · Natural Compounds · Compound Libraries · Recombinant Proteins**

This product is for Research Use Only · Not for Human or Veterinary or Therapeutic Use

Tel:781-999-4286 E\_mail:info@targetmol.com Address:34 Washington Street,Wellesley Hills,MA 02481