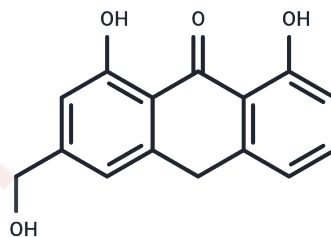


## Aloe emodin anthrone

## Chemical Properties

CAS No. :	6247-99-0
Formula:	C <sub>15</sub> H <sub>12</sub> O <sub>4</sub>
Molecular Weight:	256.25
Storage:	Powder: -20°C for 3 years   In solvent: -80°C for 1 year Actual storage temperature shall be subject to the COA.



## Biological Description

Description	Aloe emodin anthrone is a stimulant-laxative which has been shown to enhance colonic membrane permeability of water-soluble and poorly permeable compounds.
Targets(IC50)	Others

## Preparing Stock Solutions

	1mg	5mg	10mg
1 mM	3.9024 mL	19.5122 mL	39.0244 mL
5 mM	0.7805 mL	3.9024 mL	7.8049 mL
10 mM	0.3902 mL	1.9512 mL	3.9024 mL
50 mM	0.078 mL	0.3902 mL	0.7805 mL

Please select the appropriate solvent to prepare the stock solution, according to the solubility of the product in different solvents. Please use it as soon as possible.

Note: The dilution table applies only to solid products. For liquid products, please calculate the stock solution based on the stated concentration and/or density.

## Reference

- Kai M, Hayashi K, Kaida I, Aki H, Yamamoto M. Permeation-enhancing effect of aloe-emodin anthrone on water-soluble and poorly permeable compounds in rat colonic mucosa. *Biol Pharm Bull.* 2002 Dec;25(12):1608-13. PubMed PMID: 12499649.
- Yagi T, Yamauchi K, Kuwano S. The synergistic purgative action of aloe-emodin anthrone and rhein anthrone in mice: synergism in large intestinal propulsion and water secretion. *J Pharm Pharmacol.* 1997 Jan;49(1):22-5. PubMed PMID: 9120764.
- Che QM, Akao T, Hattori M, Kobashi K, Namba T. Isolation of a human intestinal bacterium capable of transforming barbaloin to aloe-emodin anthrone. *Planta Med.* 1991 Feb;57(1):15-9. PubMed PMID: 2062951.

**Inhibitor · Natural Compounds · Compound Libraries · Recombinant Proteins**

This product is for Research Use Only · Not for Human or Veterinary or Therapeutic Use

Tel:781-999-4286 E\_mail:info@targetmol.com Address:34 Washington Street,Wellesley Hills,MA 02481