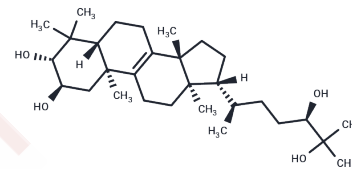


Fasciculol A

Chemical Properties

CAS No. :	64971-21-7
Formula:	C ₃₀ H ₅₂ O ₄
Molecular Weight:	476.73
Storage:	Powder: -20°C for 3 years In solvent: -80°C for 1 year Actual storage temperature shall be subject to the COA.



Biological Description

Description	Fasciculol A is a terpenoid.
Targets(IC50)	Others

Preparing Stock Solutions

	1mg	5mg	10mg
1 mM	2.0976 mL	10.4881 mL	20.9762 mL
5 mM	0.4195 mL	2.0976 mL	4.1952 mL
10 mM	0.2098 mL	1.0488 mL	2.0976 mL
50 mM	0.042 mL	0.2098 mL	0.4195 mL

Please select the appropriate solvent to prepare the stock solution, according to the solubility of the product in different solvents. Please use it as soon as possible.

Note: The dilution table applies only to solid products. For liquid products, please calculate the stock solution based on the stated concentration and/or density.

Reference

- Catani M, Howard RJ, Pajevic S, Jones DK. Virtual in vivo interactive dissection of white matter fasciculi in the human brain. *Neuroimage*. 2002 Sep;17(1):77-94. PubMed PMID: 12482069.
- Shergill SS, Kanaan RA, Chitnis XA, O'Daly O, Jones DK, Frangou S, Williams SC, Howard RJ, Barker GJ, Murray RM, McGuire P. A diffusion tensor imaging study of fasciculi in schizophrenia. *Am J Psychiatry*. 2007 Mar;164(3):467-73. PubMed PMID: 17329472.
- Bernal B, Rey G, Dunoyer C, Shanbhag H, Altman N. Agenesis of the arcuate fasciculi in congenital bilateral perisylvian syndrome: a diffusion tensor imaging and tractography study. *Arch Neurol*. 2010 Apr;67(4):501-5. doi: 10.1001/archneurol.2010.59. PubMed PMID: 20385920.
- Simonian PT, Sussmann PS, van Trommel M, Wickiewicz TL, Warren RF. Popliteomeniscal fasciculi and lateral meniscal stability. *Am J Sports Med*. 1997 Nov-Dec;25(6):849-53. PubMed PMID: 9397276.

Inhibitor · Natural Compounds · Compound Libraries · Recombinant Proteins

This product is for Research Use Only · Not for Human or Veterinary or Therapeutic Use

Tel:781-999-4286 E_mail:info@targetmol.com Address:34 Washington Street,Wellesley Hills,MA 02481