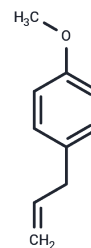


## Estragole

## Chemical Properties

CAS No. :	140-67-0
Formula:	C <sub>10</sub> H <sub>12</sub> O
Molecular Weight:	148.20
Storage:	Pure form: -20°C for 3 years   In solvent: -80°C for 1 year Actual storage temperature shall be subject to the COA.



## Biological Description

Description	Estragole (4-Allylanisole) is found in allspice, and is a constituent of many essential oils. Estragole is a flavouring agent.
Targets(IC50)	Apoptosis, Others, NF-κB, Nrf2, Parasite, ROS

## Solubility Information

Solubility	DMSO: 50 mg/mL (337.38 mM), Sonication is recommended. (< 1 mg/ml refers to the product slightly soluble or insoluble)
In vivo Formulation	10% DMSO+40% PEG300+5% Tween 80+45% Saline: 2 mg/mL (13.5 mM), Sonication is recommended. <i>Please add the solvents sequentially, clarifying the solution as much as possible before adding the next one. Dissolve by heating and/or sonication if necessary. Working solution is recommended to be prepared and used immediately. The formulation provided above is for reference purposes only. In vivo formulations may vary and should be modified based on specific experimental conditions.</i>

## Preparing Stock Solutions

	1mg	5mg	10mg
1 mM	6.7476 mL	33.7382 mL	67.4764 mL
5 mM	1.3495 mL	6.7476 mL	13.4953 mL
10 mM	0.6748 mL	3.3738 mL	6.7476 mL
50 mM	0.135 mL	0.6748 mL	1.3495 mL

Please select the appropriate solvent to prepare the stock solution, according to the solubility of the product in different solvents. Please use it as soon as possible.

Note: The dilution table applies only to solid products. For liquid products, please calculate the stock solution based on the stated concentration and/or density.

Reference

Hayes J L , Strom B L , Roton L M , et al. Repellent properties of the host compound 4-allylanisole to the southern pine beetle[J]. Journal of Chemical Ecology, 1994, 20(7):1595-1615.

**Inhibitor · Natural Compounds · Compound Libraries · Recombinant Proteins**

This product is for Research Use Only· Not for Human or Veterinary or Therapeutic Use

Tel:781-999-4286 E\_mail:info@targetmol.com Address:34 Washington Street,Wellesley Hills,MA 02481