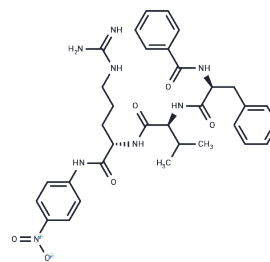


S 2160

Chemical Properties

CAS No. : 54799-93-8
 Formula: C₃₃H₄₀N₈O₆
 Molecular Weight: 644.72
 Storage: Powder: -20°C for 3 years | In solvent: -80°C for 1 year
 Actual storage temperature shall be subject to the COA.



Biological Description

Description	S 2160 is a synthetic chromogenic substrate for thrombin.
Targets(IC50)	Others,Cysteine Protease

Preparing Stock Solutions

	1mg	5mg	10mg
1 mM	1.5511 mL	7.7553 mL	15.5106 mL
5 mM	0.3102 mL	1.5511 mL	3.1021 mL
10 mM	0.1551 mL	0.7755 mL	1.5511 mL
50 mM	0.031 mL	0.1551 mL	0.3102 mL

Please select the appropriate solvent to prepare the stock solution, according to the solubility of the product in different solvents. Please use it as soon as possible.

Note: The dilution table applies only to solid products. For liquid products, please calculate the stock solution based on the stated concentration and/or density.

Reference

Balasubramanian N, Toubarro D, Simões N. Biochemical study and in vitro insect immune suppression by a trypsin-like secreted protease from the nematode *Steinernema carpocapsae*. *Parasite Immunol.* 2010 Mar;32(3):165-75. doi: 10.1111/j.1365-3024.2009.01172.x. PubMed PMID: 20398179.

Jiao HM, Yang LX, Lu B, Wu YQ, Zhou YC. Shedaoenase, a novel fibrinogenase from the venom of *Agkistrodon shedaoentesis* Zhao. *Acta Biochim Biophys Sin (Shanghai).* 2005 Dec;37(12):835-42. PubMed PMID: 16331328.

Rosén S. Chromogenic methods in coagulation diagnostics. *Hamostaseologie.* 2005 Aug;25(3):259-66. Review. PubMed PMID: 16113749.

Johns ME, Tai PC, Derby CD. Serine proteases in the spiny lobster olfactory organ: their functional expression along a developmental axis, and the contribution of a CUB-serine protease. *J Neurobiol.* 2004 Dec;61(3):377-91. PubMed PMID: 15389692.

Inhibitor · Natural Compounds · Compound Libraries · Recombinant Proteins

This product is for Research Use Only · Not for Human or Veterinary or Therapeutic Use

Tel:781-999-4286 E_mail:info@targetmol.com Address:34 Washington Street,Wellesley Hills,MA 02481