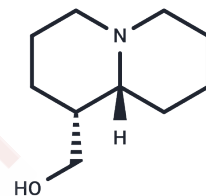


## Lupinine hydrochloride

## Chemical Properties

CAS No. : 6113-09-3  
 Formula: C<sub>10</sub>H<sub>20</sub>ClNO  
 Molecular Weight: 205.73  
 Storage: Powder: -20°C for 3 years | In solvent: -80°C for 1 year  
*Actual storage temperature shall be subject to the COA.*



HCl

## Biological Description

Description	Lupinine hydrochloride is a bioactive chemical.
Targets(IC50)	Others

## Preparing Stock Solutions

	1mg	5mg	10mg
1 mM	4.8607 mL	24.3037 mL	48.6074 mL
5 mM	0.9721 mL	4.8607 mL	9.7215 mL
10 mM	0.4861 mL	2.4304 mL	4.8607 mL
50 mM	0.0972 mL	0.4861 mL	0.9721 mL

Please select the appropriate solvent to prepare the stock solution, according to the solubility of the product in different solvents. Please use it as soon as possible.

Note: The dilution table applies only to solid products. For liquid products, please calculate the stock solution based on the stated concentration and/or density.

### Reference

Yasumatsu K, Iwata S, Inoue M, Ninomiya Y. Fatty acid taste quality information via GPR120 in the anterior tongue of mice. *Acta Physiol (Oxf)*. 2018 Oct 30:e13215. doi: 10.1111/apha.13215. [Epub ahead of print] PubMed PMID: 30375738.

Jiang MZ, Qiu ZJ, Zhang GW, Gao SY, You XY, Ma YF. *Mucilaginibacter xinganensis* sp. nov., a phenanthrene-degrading bacterium isolated from wetland soil. *Antonie Van Leeuwenhoek*. 2018 Oct 30. doi: 10.1007/s10482-018-1194-6. [Epub ahead of print] PubMed PMID: 30374915.

Si J, Meng R, Gao P, Hui F, Li Y, Liu X, Yang B. Linagliptin protects rat carotid artery from balloon injury and activates the NRF2 antioxidant pathway. *Exp Anim*. 2018 Oct 23. doi: 10.1538/expanim.18-0089. [Epub ahead of print] PubMed PMID: 30369549.

Tamzali Y, Demeret S, Haddad E, Guillot H, Caumes E, Jauréguiberry S. Post-malaria neurological syndrome: four cases, review of the literature and clarification of the nosological framework. *Malar J*. 2018 Oct 26;17(1):387. doi: 10.1186/s12936-018-2542-8. PubMed PMID: 30367650.

**Inhibitor · Natural Compounds · Compound Libraries · Recombinant Proteins**

This product is for Research Use Only · Not for Human or Veterinary or Therapeutic Use

Tel:781-999-4286 E\_mail:info@targetmol.com Address:34 Washington Street,Wellesley Hills,MA 02481