

Lotusine

Chemical Properties

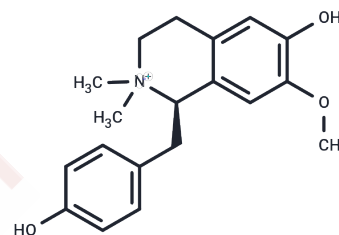
CAS No. : 6871-67-6

Formula: C₁₉H₂₄NO₃

Molecular Weight: 314.4

Storage: Pure form: -20°C for 3 years | In solvent: -80°C for 1 year

Actual storage temperature shall be subject to the COA.



Biological Description

Description	Lotusine, a pure alkaloid extracted from the <i>Nelumbo nucifera</i> Gaertn., affects action potentials in the myocardium and slow inward current in cardiac Purkinje fibers.
Targets(IC50)	Others

Solubility Information

Solubility	DMSO: 3.15 mg/mL (10.02 mM), Sonication is recommended. (< 1 mg/ml refers to the product slightly soluble or insoluble)
------------	--

Preparing Stock Solutions

	1mg	5mg	10mg
1 mM	3.1807 mL	15.9033 mL	31.8066 mL
5 mM	0.6361 mL	3.1807 mL	6.3613 mL
10 mM	0.3181 mL	1.5903 mL	3.1807 mL
50 mM	0.0636 mL	0.3181 mL	0.6361 mL

Please select the appropriate solvent to prepare the stock solution, according to the solubility of the product in different solvents. Please use it as soon as possible.

Note: The dilution table applies only to solid products. For liquid products, please calculate the stock solution based on the stated concentration and/or density.

Reference

Le Crouéour G, et al. Lotusine G: a new cyclopeptide alkaloid from *Zizyphus lotus*. *Fitoterapia*. 2002 Feb;73(1):63-8.

Inhibitor · Natural Compounds · Compound Libraries · Recombinant Proteins

This product is for Research Use Only · Not for Human or Veterinary or Therapeutic Use

Tel:781-999-4286 E_mail:info@targetmol.com Address:34 Washington Street,Wellesley Hills,MA 02481