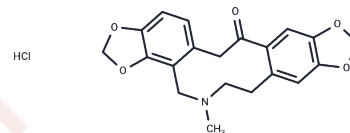


## Protopine hydrochloride

## Chemical Properties

CAS No. :	6164-47-2
Formula:	C <sub>20</sub> H <sub>20</sub> ClNO <sub>5</sub>
Molecular Weight:	389.83
Storage:	Powder: -20°C for 3 years   In solvent: -80°C for 1 year Actual storage temperature shall be subject to the COA.



## Biological Description

Description	Protopine has antiplatelet effects, which is due to inhibition on thromboxane formation and phosphoinositides breakdown and then lead to the decrease of intracellular calcium concentration. Protopine seems to inhibit the heterotypic cell adhesion between MDA-MB-231 cells, and human umbilical vein endothelial cells by changing the expression of adhesive factors.
Targets(IC50)	EGFR, cAMP, Cholinesterase (ChE)

## Preparing Stock Solutions

	1mg	5mg	10mg
1 mM	2.5652 mL	12.8261 mL	25.6522 mL
5 mM	0.513 mL	2.5652 mL	5.1304 mL
10 mM	0.2565 mL	1.2826 mL	2.5652 mL
50 mM	0.0513 mL	0.2565 mL	0.513 mL

Please select the appropriate solvent to prepare the stock solution, according to the solubility of the product in different solvents. Please use it as soon as possible.

Note: The dilution table applies only to solid products. For liquid products, please calculate the stock solution based on the stated concentration and/or density.

Inhibitor · Natural Compounds · Compound Libraries · Recombinant Proteins

This product is for Research Use Only · Not for Human or Veterinary or Therapeutic Use

Tel: 781-999-4286 E\_mail: info@targetmol.com Address: 34 Washington Street, Wellesley Hills, MA 02481