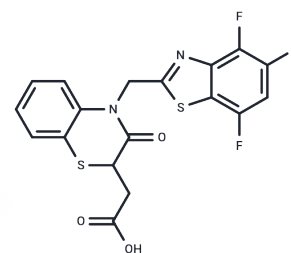


Spr 210

## Chemical Properties

CAS No. : 143162-65-6  
 Formula: C<sub>18</sub>H<sub>11</sub>F<sub>3</sub>N<sub>2</sub>O<sub>3</sub>S<sub>2</sub>  
 Molecular Weight: 424.42  
 Storage: Powder: -20°C for 3 years | In solvent: -80°C for 1 year  
 Actual storage temperature shall be subject to the COA.



## Biological Description

Description	Spr 210 is an aldose reductase (AR) inhibitor with potential uses as a therapeutic agent for preventing and improving some diabetic complications.
Targets(IC50)	Others

## Preparing Stock Solutions

	1mg	5mg	10mg
1 mM	2.3562 mL	11.7808 mL	23.5616 mL
5 mM	0.4712 mL	2.3562 mL	4.7123 mL
10 mM	0.2356 mL	1.1781 mL	2.3562 mL
50 mM	0.0471 mL	0.2356 mL	0.4712 mL

Please select the appropriate solvent to prepare the stock solution, according to the solubility of the product in different solvents. Please use it as soon as possible.

Note: The dilution table applies only to solid products. For liquid products, please calculate the stock solution based on the stated concentration and/or density.

Inhibitor · Natural Compounds · Compound Libraries · Recombinant Proteins

This product is for Research Use Only · Not for Human or Veterinary or Therapeutic Use

Tel: 781-999-4286 E\_mail: info@targetmol.com Address: 34 Washington Street, Wellesley Hills, MA 02481