

MHC class II antigen (45-57) [Homo sapiens]

Chemical Properties

CAS No. :

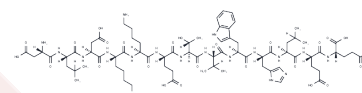
Formula: C73H112N18O25

Molecular Weight: 1641.78

Keep away from moisture

Storage: Powder: -20°C for 3 years | In solvent: -80°C for 1 year

Actual storage temperature shall be subject to the COA.



Biological Description

| | |
|---------------|--|
| Description | MHC class II antigen (45-57) [Homo sapiens] is a peptide with the sequence H2N-Asp-Leu-Asp-Lys-Lys-Glu-Thr-Val-Trp-His-Leu-Glu- Glu-OH, MW= 1868.07. MHC (major histocompatibility complex) class II molecules are found only on antigen-presenting cells and lymphocytes. |
| Targets(IC50) | Others |
| In vitro | The antigens presented by class II peptides are derived from extracellular proteins (not cytosolic as in class I); hence, the MHC class II-dependent pathway of antigen presentation is called the endocytic or exogenous pathway. Loading of MHC class II occurs by phagocytosis; extracellular proteins are endocytosed, ingested in lysosomes, and created by the class II MHC molecule prior to the molecule's migration to the cellular membrane. MHC class two is formed of two chains, α , and β , each having two domains— $\alpha 1$ and $\alpha 2$ and $\beta 1$ and $\beta 2$ —each chain having a transmembrane domain, $\alpha 2$, and $\beta 2$, respectively, anchoring the MHC class II molecule to the cell membrane. The peptide-binding groove is formed of the heterodimer of $\alpha 1$ and $\beta 1$. MHC class II molecules in humans have five to six isotypes. Classic molecules present peptides to CD4+ lymphocytes. Nonclassic molecules, accessories, with intracellular functions, are not exposed on cell membranes, but in internal membranes in lysosomes, normally loading the antigenic peptides onto classic MHC class II molecules[1][2]. |

Solubility Information

| | |
|------------|--|
| Solubility | DMSO: ≥ 164.2 mg/mL, Sonication is recommended. (< 1 mg/ml refers to the product slightly soluble or insoluble) |
|------------|--|

Preparing Stock Solutions

| | 1mg | 5mg | 10mg |
|-------|------------|------------|-------------|
| 1 mM | 0.6091 mL | 3.0455 mL | 6.091 mL |
| 5 mM | 0.1218 mL | 0.6091 mL | 1.2182 mL |
| 10 mM | 0.0609 mL | 0.3045 mL | 0.6091 mL |
| 50 mM | 0.0122 mL | 0.0609 mL | 0.1218 mL |

Please select the appropriate solvent to prepare the stock solution, according to the solubility of the product in different solvents. Please use it as soon as possible.

Note: The dilution table applies only to solid products. For liquid products, please calculate the stock solution based on the stated concentration and/or density.

Inhibitor · Natural Compounds · Compound Libraries · Recombinant Proteins

This product is for Research Use Only · Not for Human or Veterinary or Therapeutic Use

Tel:781-999-4286 E_mail:info@targetmol.com Address:34 Washington Street,Wellesley Hills,MA 02481