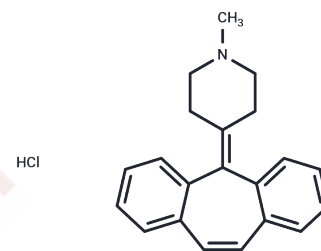


## Cyproheptadine hydrochloride

## Chemical Properties

CAS No. :	969-33-5
Formula:	C <sub>21</sub> H <sub>21</sub> N·HCl
Molecular Weight:	323.86
Storage:	Store under nitrogen Powder: -20°C for 3 years   In solvent: -80°C for 1 year <i>Actual storage temperature shall be subject to the COA.</i>



## Biological Description

Description	Cyproheptadine hydrochloride is an effective orally active 5-HT <sub>2A</sub> receptor antagonist with antidepressant, anti-serotonin, and antiplatelet activities. It can be used for research on thromboembolic diseases and for the establishment of diabetes models.
Targets(IC50)	5-HT Receptor

## Solubility Information

Solubility	DMSO: 50 mg/mL (154.39 mM), Sonication is recommended. (< 1 mg/ml refers to the product slightly soluble or insoluble)
In vivo Formulation	10% DMSO+40% PEG300+5% Tween 80+45% Saline: 2 mg/mL (6.18 mM), Sonication is recommended. <i>Please add the solvents sequentially, clarifying the solution as much as possible before adding the next one. Dissolve by heating and/or sonication if necessary. Working solution is recommended to be prepared and used immediately. The formulation provided above is for reference purposes only. In vivo formulations may vary and should be modified based on specific experimental conditions.</i>

## Preparing Stock Solutions

	1mg	5mg	10mg
1 mM	3.0878 mL	15.4388 mL	30.8775 mL
5 mM	0.6176 mL	3.0878 mL	6.1755 mL
10 mM	0.3088 mL	1.5439 mL	3.0878 mL
50 mM	0.0618 mL	0.3088 mL	0.6176 mL

Please select the appropriate solvent to prepare the stock solution, according to the solubility of the product in different solvents. Please use it as soon as possible.

Note: The dilution table applies only to solid products. For liquid products, please calculate the stock solution based on the stated concentration and/or density.

Reference

Honda, M., T. Nishida, and H. Ono, Tricyclic analogs cyclobenzaprine, amitriptyline and cyproheptadine inhibit the spinal reflex transmission through 5-HT(2) receptors. Eur J Pharmacol, 2003. 458(1-2): p. 91-9.

Calka, O., et al., Effect of cyproheptadine on serum leptin levels. Adv Ther, 2005. 22(5): p. 424-8.

**Inhibitor · Natural Compounds · Compound Libraries · Recombinant Proteins**

This product is for Research Use Only · Not for Human or Veterinary or Therapeutic Use

Tel:781-999-4286 E\_mail:info@targetmol.com Address:34 Washington Street,Wellesley Hills,MA 02481