

Janumet

Chemical Properties

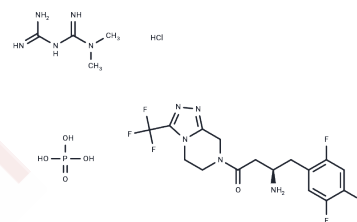
CAS No. : 1011232-08-8

Formula: C₂₀H₃₀ClF₆N₁₀O₅P

Molecular Weight: 670.93

Storage: Powder: -20°C for 3 years | In solvent: -80°C for 1 year

Actual storage temperature shall be subject to the COA.



Biological Description

Description	Metformin hydrochloride mixture with sitagliptin phosphate is an AMP-activated protein kinase stimulant. It is also a CD26 antigen inhibitor, Gluconeogenesis inhibitor, and Glucose modulator.
Targets(IC50)	Others

Solubility Information

Solubility	DMSO: Soluble, (< 1 mg/ml refers to the product slightly soluble or insoluble)
------------	--

Preparing Stock Solutions

	1mg	5mg	10mg
1 mM	1.4905 mL	7.4523 mL	14.9047 mL
5 mM	0.2981 mL	1.4905 mL	2.9809 mL
10 mM	0.149 mL	0.7452 mL	1.4905 mL
50 mM	0.0298 mL	0.149 mL	0.2981 mL

Please select the appropriate solvent to prepare the stock solution, according to the solubility of the product in different solvents. Please use it as soon as possible.

Note: The dilution table applies only to solid products. For liquid products, please calculate the stock solution based on the stated concentration and/or density.

Reference

El-Zaher AA, Elkady EF, Elwy HM, Saleh MAEM. A Versatile Liquid Chromatographic Method for the Simultaneous Determination of Metformin, Sitagliptin, Simvastatin, and Ezetimibe in Different Dosage Forms. *J AOAC Int.* 2018 Mar 1;101(2):401-409. doi: 10.5740/jaoacint.17-0050. Epub 2017 Jul 27. PubMed PMID: 28748781.

Lotfy HM, Mohamed D, Mowaka S. A comparative study of smart spectrophotometric methods for simultaneous determination of sitagliptin phosphate and metformin hydrochloride in their binary mixture. *Spectrochim Acta A Mol Biomol Spectrosc.* 2015;149:441-51. doi: 10.1016/j.saa.2015.04.076. Epub 2015 Apr 30. PubMed PMID: 25978011.

El-Bagary RI, Elkady EF, Ayoub BM. Liquid chromatographic determination of sitagliptin either alone or in ternary mixture with metformin and sitagliptin degradation product. *Talanta.* 2011 Jul 15;85(1):673-80. doi: 10.1016/j.talanta.2011.04.051. Epub 2011 Apr 27. PubMed PMID: 21645757.

El-Bagary RI, Elkady EF, Ayoub BM. Spectrofluorometric and spectrophotometric methods for the determination of sitagliptin in binary mixture with metformin and ternary mixture with metformin and sitagliptin alkaline degradation product. *Int J Biomed Sci.* 2011 Mar;7(1):62-9. PubMed PMID: 23675222; PubMed Central PMCID: PMC3614813.

Inhibitor · Natural Compounds · Compound Libraries · Recombinant Proteins

This product is for Research Use Only · Not for Human or Veterinary or Therapeutic Use

Tel:781-999-4286 E_mail:info@targetmol.com Address:34 Washington Street,Wellesley Hills,MA 02481