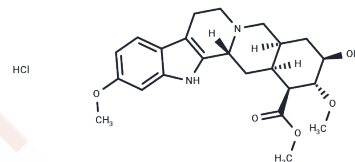


## Methyl reserpate hydrochloride

## Chemical Properties

CAS No. :	1910-71-0
Formula:	C <sub>23</sub> H <sub>31</sub> ClN <sub>2</sub> O <sub>5</sub>
Molecular Weight:	450.96
Storage:	Powder: -20°C for 3 years   In solvent: -80°C for 1 year Actual storage temperature shall be subject to the COA.



## Biological Description

Description	Methyl reserpate hydrochloride is a biochemical.
Targets(IC50)	Others

## Preparing Stock Solutions

	1mg	5mg	10mg
1 mM	2.2175 mL	11.0875 mL	22.1749 mL
5 mM	0.4435 mL	2.2175 mL	4.435 mL
10 mM	0.2217 mL	1.1087 mL	2.2175 mL
50 mM	0.0443 mL	0.2217 mL	0.4435 mL

Please select the appropriate solvent to prepare the stock solution, according to the solubility of the product in different solvents. Please use it as soon as possible.

Note: The dilution table applies only to solid products. For liquid products, please calculate the stock solution based on the stated concentration and/or density.

**Inhibitor · Natural Compounds · Compound Libraries · Recombinant Proteins**

This product is for Research Use Only · Not for Human or Veterinary or Therapeutic Use

Tel:781-999-4286 E\_mail:info@targetmol.com Address:34 Washington Street,Wellesley Hills,MA 02481