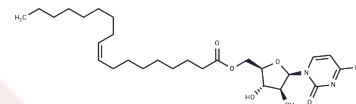


Elacytarabine

Chemical Properties

CAS No. :	188181-42-2
Formula:	C ₂₇ H ₄₅ N ₃ O ₆
Molecular Weight:	507.66
Storage:	Powder: -20°C for 3 years In solvent: -80°C for 1 year Actual storage temperature shall be subject to the COA.



Biological Description

Description	Elacytarabine (M7594 0037), a lipid-conjugated derivative of the nucleoside analog cytarabine, is an antineoplastic drug. It has cytotoxicity in solid tumors.
Targets(IC50)	Nucleoside Antimetabolite/Analog,Others

Solubility Information

Solubility	DMSO: 100 mg/mL (196.98 mM),Sonication is recommended. (< 1 mg/ml refers to the product slightly soluble or insoluble)
In vivo Formulation	10% DMSO+40% PEG300+5% Tween 80+45% Saline: 4 mg/mL (7.88 mM),Sonication is recommended. <i>Please add the solvents sequentially, clarifying the solution as much as possible before adding the next one. Dissolve by heating and/or sonication if necessary. Working solution is recommended to be prepared and used immediately. The formulation provided above is for reference purposes only. In vivo formulations may vary and should be modified based on specific experimental conditions.</i>

Preparing Stock Solutions

	1mg	5mg	10mg
1 mM	1.9698 mL	9.8491 mL	19.6982 mL
5 mM	0.394 mL	1.9698 mL	3.9396 mL
10 mM	0.197 mL	0.9849 mL	1.9698 mL
50 mM	0.0394 mL	0.197 mL	0.394 mL

Please select the appropriate solvent to prepare the stock solution, according to the solubility of the product in different solvents. Please use it as soon as possible.

Note: The dilution table applies only to solid products. For liquid products, please calculate the stock solution based on the stated concentration and/or density.

Reference

DiNardo CD, et al. Elacytarabine (CP-4055) in the treatment of acute myeloid leukemia. Future Oncol. 2013 Aug;9 (8):1073-82.

Inhibitor · Natural Compounds · Compound Libraries · Recombinant Proteins

This product is for Research Use Only · Not for Human or Veterinary or Therapeutic Use

Tel:781-999-4286 E_mail:info@targetmol.com Address:34 Washington Street,Wellesley Hills,MA 02481