

Kobe2602

Chemical Properties

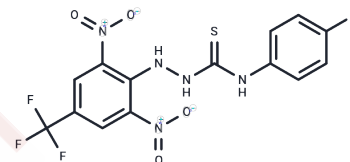
CAS No. : 454453-49-7

Formula: C₁₄H₉F₄N₅O₄S

Molecular Weight: 419.31

Storage: Powder: -20°C for 3 years | In solvent: -80°C for 1 year

Actual storage temperature shall be subject to the COA.



Biological Description

Description	Kobe 2602 is an inhibitor of Ras that exhibits anticancer chemotherapeutic activities.
Targets(IC50)	Raf,Ras
Kinase Assay	Migration assays: Assays are conducted in wells of a 24-well, 8 µm pore size Transwell plate. A 6.5-mm insert membrane is coated with 0.1 mL COL-I (300 µg/mL in MEGM) and then air dried for 16 hours. The collagen coating is rehydrated for 1 hour in 0.2 mL MEGM. The inner chamber contains MEGM-10% FBS as a chemoattractant. The compounds (10-100 µmol/L) or DMSO (0.1%-1%) are added to both inner and outer chambers. Before plating in the outer chamber, cells (5×10 ⁴) are coincubated for 20 minutes with the compounds or DMSO in MEGM. Cells are allowed to migrate for 16 to 18 hours. The cells remaining on the top surface of the membrane are removed with a cotton swab. The cells on the bottom surface of the membrane are fixed and stained (0.2% crystal violet). The incorporated dye is extracted with 1% SDS and the A570 is measured.

Solubility Information

Solubility	DMSO: 50 mg/mL (119.24 mM),Sonication is recommended. (< 1 mg/ml refers to the product slightly soluble or insoluble)
------------	--

Preparing Stock Solutions

	1mg	5mg	10mg
1 mM	2.3849 mL	11.9244 mL	23.8487 mL
5 mM	0.477 mL	2.3849 mL	4.7697 mL
10 mM	0.2385 mL	1.1924 mL	2.3849 mL
50 mM	0.0477 mL	0.2385 mL	0.477 mL

Please select the appropriate solvent to prepare the stock solution, according to the solubility of the product in different solvents. Please use it as soon as possible.

Note: The dilution table applies only to solid products. For liquid products, please calculate the stock solution based on the stated concentration and/or density.

Reference

Shima F, et al. Proc Natl Acad Sci U S A. 2013 May 14;110(20):8182-7.

Inhibitor · Natural Compounds · Compound Libraries · Recombinant Proteins

This product is for Research Use Only · Not for Human or Veterinary or Therapeutic Use

Tel:781-999-4286 E_mail:info@targetmol.com Address:34 Washington Street,Wellesley Hills,MA 02481