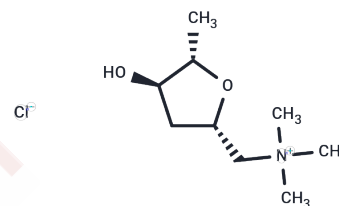


Muscarine chloride

Chemical Properties

CAS No. :	2303-35-7
Formula:	C ₉ H ₂₀ ClNO ₂
Molecular Weight:	209.71
Storage:	Powder: -20°C for 3 years In solvent: -80°C for 1 year Actual storage temperature shall be subject to the COA.



Biological Description

Description	Muscarine chloride is a toxic alkaloid found in Amanita muscaria and other fungi of the Inocybe species.
Targets(IC50)	Others,AChR

Preparing Stock Solutions

	1mg	5mg	10mg
1 mM	4.7685 mL	23.8424 mL	47.6849 mL
5 mM	0.9537 mL	4.7685 mL	9.537 mL
10 mM	0.4768 mL	2.3842 mL	4.7685 mL
50 mM	0.0954 mL	0.4768 mL	0.9537 mL

Please select the appropriate solvent to prepare the stock solution, according to the solubility of the product in different solvents. Please use it as soon as possible.

Note: The dilution table applies only to solid products. For liquid products, please calculate the stock solution based on the stated concentration and/or density.

Reference

- Eyer P. The role of oximes in the management of organophosphorus pesticide poisoning. *Toxicol Rev.* 2003;22(3): 165-90. Review. PubMed PMID: 15181665.
- Cinca J, Rodríguez-Sinovas A. Cardiovascular reflex responses induced by epicardial chemoreceptor stimulation. *Cardiovasc Res.* 2000 Jan 1;45(1):163-71. Review. PubMed PMID: 10728330.
- Schwantes U, Topfmeier P. Importance of pharmacological and physicochemical properties for tolerance of antimuscarinic drugs in the treatment of detrusor instability and detrusor hyperreflexia--chances for improvement of therapy. *Int J Clin Pharmacol Ther.* 1999 May;37(5):209-18. Review. PubMed PMID: 10363619.
- Finkbeiner AE, Bissada NK, Welch LT. Uro pharmacology: v. choline esters and other parasympathomimetic drugs. *Urology.* 1977 Jul;10(1):83-9. Review. PubMed PMID: 17940.

Inhibitor · Natural Compounds · Compound Libraries · Recombinant Proteins

This product is for Research Use Only · Not for Human or Veterinary or Therapeutic Use

Tel:781-999-4286 E_mail:info@targetmol.com Address:34 Washington Street,Wellesley Hills,MA 02481