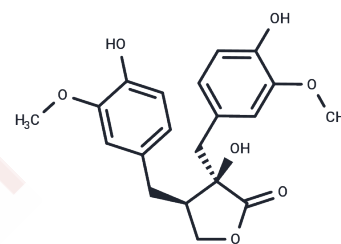


(+)-Nortrachelogenin

Chemical Properties

CAS No. :	61521-74-2
Formula:	C ₂₀ H ₂₂ O ₇
Molecular Weight:	374.38
Storage:	Powder: -20°C for 3 years In solvent: -80°C for 1 year Actual storage temperature shall be subject to the COA.



Biological Description

Description	(+)-Nortrachelogenin is a lignan isolated from Wikstroemia indica C.A. Meyer (Thymelaeaceae). (+)-Nortrachelogenin possesses antileukemic activity.
Targets(IC50)	Apoptosis,HIV Protease,Antifection,PI3K
In vitro	(+)-Nortrachelogenin is moderately active against HIV-1 in vitro. (+)-Nortrachelogenin induces morphological deformation of P. oryzae mycelia with the MMDC value of 31.3 microM[1].
In vivo	(+)-Nortrachelogenin showed effects on the central nervous system producing depression in rabbits[2].

Preparing Stock Solutions

	1mg	5mg	10mg
1 mM	2.6711 mL	13.3554 mL	26.7108 mL
5 mM	0.5342 mL	2.6711 mL	5.3422 mL
10 mM	0.2671 mL	1.3355 mL	2.6711 mL
50 mM	0.0534 mL	0.2671 mL	0.5342 mL

Please select the appropriate solvent to prepare the stock solution, according to the solubility of the product in different solvents. Please use it as soon as possible.

Note: The dilution table applies only to solid products. For liquid products, please calculate the stock solution based on the stated concentration and/or density.

Reference

Hu K, et al. Antifungal, antimitotic and anti-HIV-1 agents from the roots of Wikstroemia indica. *Planta Med.* 2000 Aug;66(6):564-7.

Kato A, Hashimoto Y, Kidokoro M. (+)Nortrachelogenin, a new pharmacologically active lignan from Wikstroemia indica. *Lloydia.* 1979 Mar-Apr;42(2):159-62.

Inhibitor · Natural Compounds · Compound Libraries · Recombinant Proteins

This product is for Research Use Only · Not for Human or Veterinary or Therapeutic Use

Tel:781-999-4286 E_mail:info@targetmol.com Address:34 Washington Street,Wellesley Hills,MA 02481